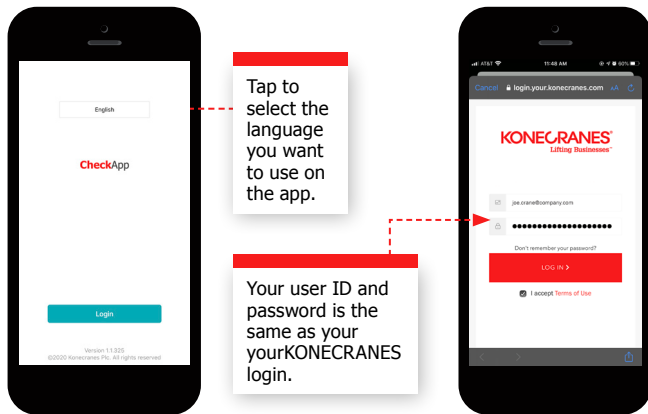


HOW TO CheckApp for Daily Inspections

- 1** Download CheckApp to your mobile device.
The App is available on both the Apple App Store for iPhones and Google Play for Android.
The app is free to download but you may need an Apple ID or Google account to download.



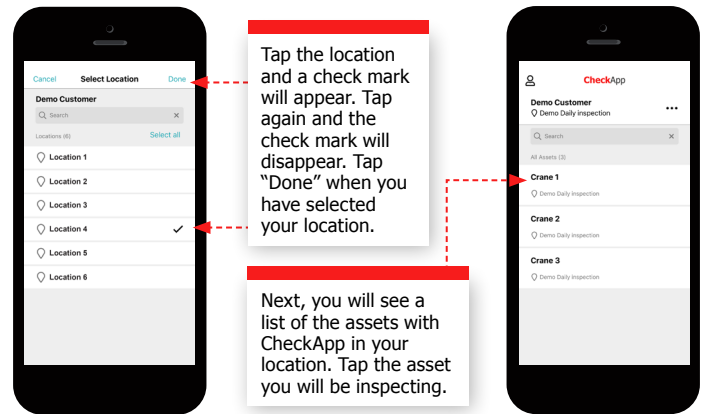
- 2** Open CheckApp on your mobile device.



Tap to select the language you want to use on the app.

Your user ID and password is the same as your KONECRANES login.

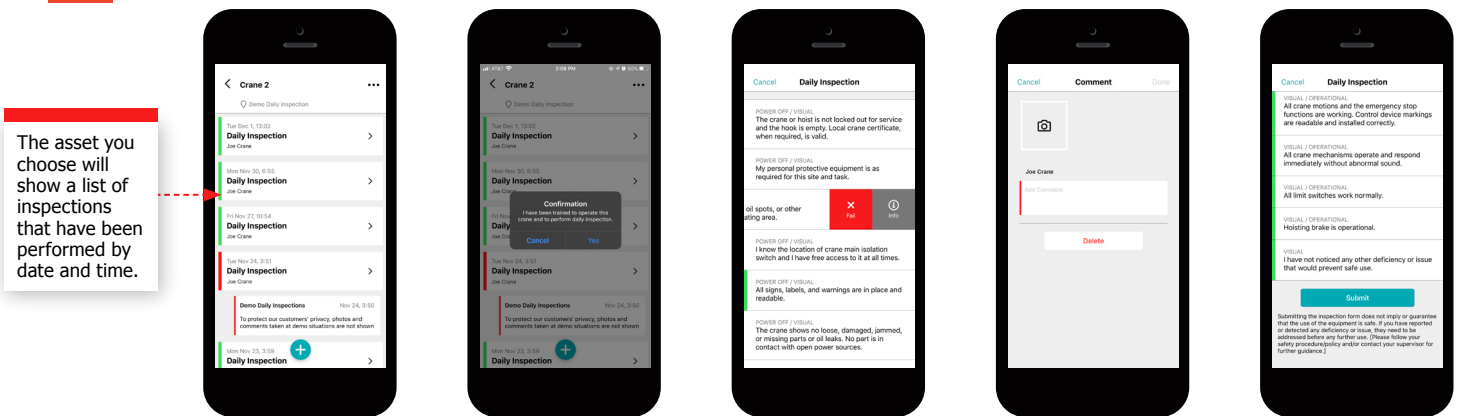
- 3** After logging in, select the correct location for the asset(s) on which you will perform the daily inspection.



Tap the location and a check mark will appear. Tap again and the check mark will disappear. Tap "Done" when you have selected your location.

Next, you will see a list of the assets with CheckApp in your location. Tap the asset you will be inspecting.

- 4** Begin your daily inspection.



The asset you choose will show a list of inspections that have been performed by date and time.

Tap the green "plus" button to begin a new inspection.

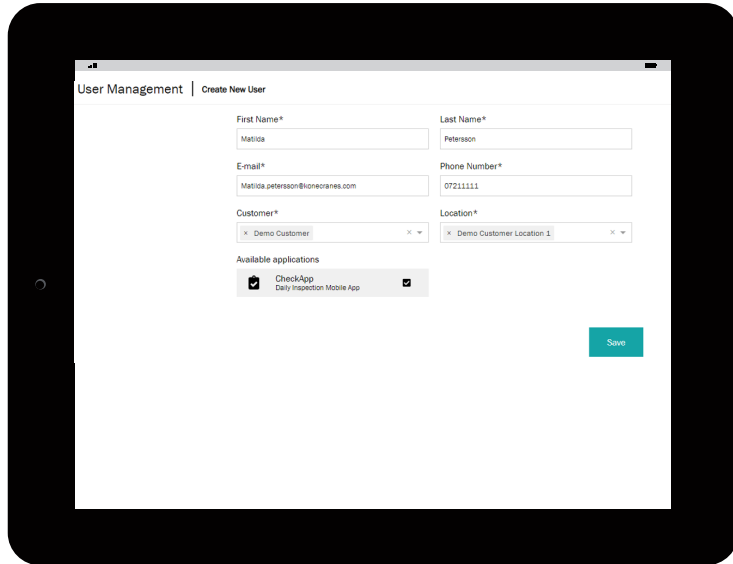
Confirm that you are trained to operate the crane and perform daily inspections.

For each step you can swipe to the right to for "pass" or swipe left to "fail" or for information on how to perform the inspection.

If you "fail" a step, you can add a photo and a comment.

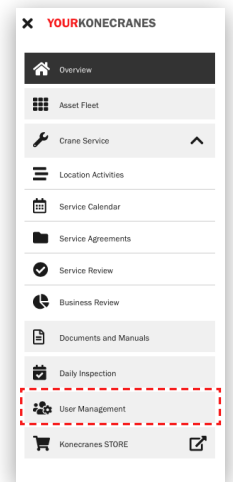
When you have finished the inspection - tap "submit." The inspection will now be in your list in the app and on your KONECRANES.

Creating a CheckApp user ID for your employees on yourKONECRANES.com

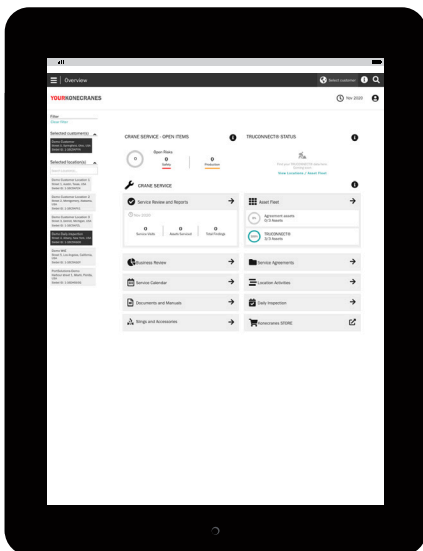


Log in to yourKONECRANES.com with your user ID on your computer or mobile device.

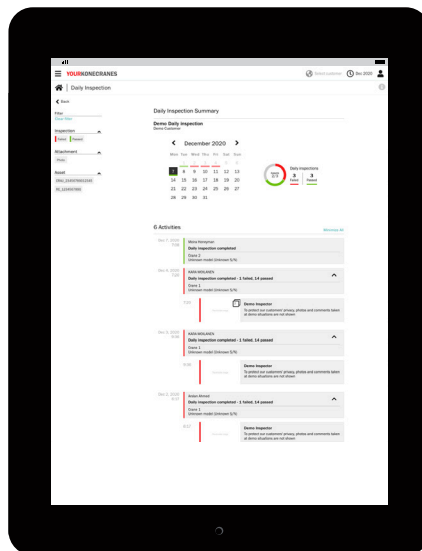
1. Go to the main menu and select "User Management."
2. Click on the "Create New User" button.
3. Fill in the information for the person who will carry out the daily inspections. There are no limits to how many users can be created for CheckApp.
4. The new CheckApp user will receive an email to activate the login and create a personal password. They will use this user ID and password to log into CheckApp.



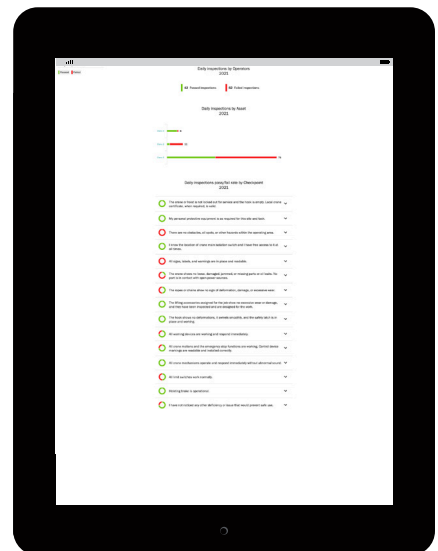
CheckApp data on yourKONECRANES.com



You can find CheckApp data by clicking on the Daily Inspection button from the main menu or on the Overview page. This will show you an overview of pass/fails.



The summary can be filtered by asset or pass/fail. Note that CheckApp users can log in to yourKONECRANES but can't see any other data in the portal other than daily inspection reports.



CheckApp data is also available on the Business Review page under the Daily Inspection tab. This shows the pass/fail rate for all your assets with CheckApp.