



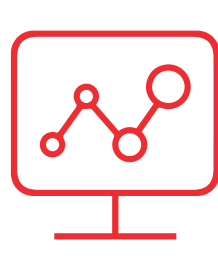
Mobile Harbor Cranes Predictive Services

Tracking critical equipment health for optimum terminal efficiency.

Unplanned equipment downtime creates unnecessary disruption to terminal operations. Continuously knowing the condition of your critical equipment means better planning, better maintenance and better equipment performance.

While the technology is a straightforward installation, the real value lies in expert data analysis. As the OEM, we speak equipment data and can interpret the sensors' data quickly and accurately.

Predictable performance using new capabilities



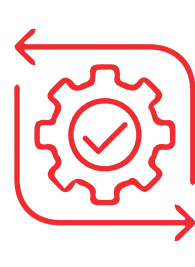
Data



Internet of Things (IoT)



OEM Expertise



Actionable Insights



HOW IT WORKS

Equipment data is captured using the best IoT hard- and software technology. The data, when combined with our unique equipment expertise yields actionable insights that will improve equipment availability, and entire operational efficiency.

We install between 15 – 30 sensors on critical areas and components of the crane including

- Hoist Motors and Gearboxes
- Diesel Generator
- Hoist Drum
- Slew Motors, Gearboxes and Bearing
- Hydraulic Pumps & Motors

The sensors are networked and connected to our remote monitoring capacity, and we proceed to analyze the incoming data streams 24/7. We can inform either your own maintenance technicians, or the Konecranes technical team in your area about upcoming critical issues.



BENEFITS

- Data-powered insight into equipment health
- Proactively mitigate downtime risk
- Accurate maintenance planning
- Better spare parts and maintenance cost management
- Improved overall safety

WHY USE KONECRANES PREDICTIVE SERVICES?

- Benefit from the combined OEM expertise and IoT capabilities
- Know your critical equipment is monitored by a dedicated team of OEM-trained specialists
- Our dedicated team can liaise with OEM engineers to tackle any issue that requires in-depth engineering analysis
- An easy way to identify and procure the required and original spare parts
- Get the required support of our Frontline technicians as required (optional)

WHAT YOU NEED TO KNOW


- Implementation time: 12 weeks.
- Konecranes' Predictive Services can be included –
 - as standard with all new Konecranes Mobile Harbor Cranes
 - retrofit on existing Generation 5 Mobile Harbor Cranes - other models on a case-by-case basis
- Data collected are protected in terms of the mandated territorial legislation and regulations
- To facilitate the Predictive Services customers should provide -
 - Appropriate information about equipment models, utilization and maintenance history, site details, etc.
 - Site and crane access for installation, testing and service delivery

Advanced Services

KONECRANES®



Konecranes is a world-leading group of Lifting Businesses™, serving a broad range of customers, including manufacturing and process industries, shipyards, ports and terminals. Konecranes provides productivity enhancing lifting solutions as well as services for lifting equipment of all makes. The Group has more than 16,000 employees at 600 locations in 50 countries. Konecranes shares are listed on the Nasdaq Helsinki (symbol: KCR).

© 2022 Konecranes. All rights reserved. 'Konecranes', 'Lifting Businesses' and  are either registered trademarks or trademarks of Konecranes.

This publication is for general informational purposes only. Konecranes reserves the right at any time, without notice, to alter or discontinue the products and/or specifications referenced herein. This publication creates no warranty on the part of Konecranes, express or implied, including but not limited to any implied warranty or merchantability or fitness for a particular purpose.