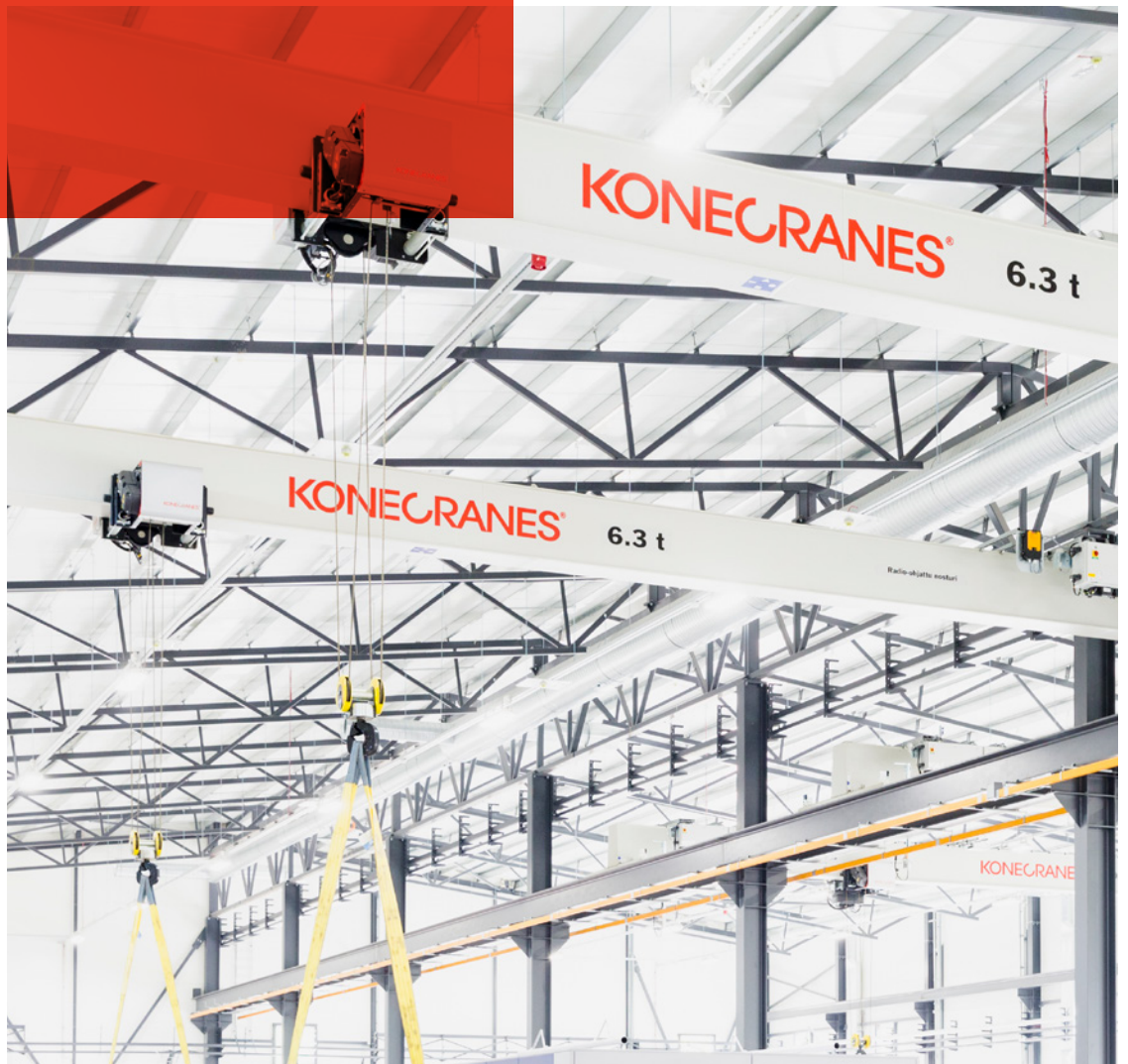


CXT CRANE

Efficiency and intelligence at work



Safe, reliable and productive lifting

The Konecranes CXT overhead crane consists of a CXT wire rope hoist attached to a strong, durable, multipurpose crane girder structure. With a wide range of girder configurations to choose from and 10,000 hoists sold around the world every year, the CXT overhead crane is an industry leader in medium-heavy indoor lifting equipment.

Basic or advanced, adaptability is one of its greatest strengths, and users appreciate the space underneath, excellent hook approaches, and Smart Features that make operating the crane safe and easy.



Girder designs



SINGLE-GIRDER CRANE

A single-girder CXT crane, with the hoist on a box or profile girder, is ideal for loads up to 40 tons. Its compact size and small approach dimensions allow you to make the most of your working area under the crane. And the light weight means less stress on your building structure, which is ultimately more cost efficient.



DOUBLE-GIRDER CRANE

With the hoist operating above the two main girders, this crane is the best choice for heavier loads and longer spans. A capacity of up to 80 tons allows higher duty classes, while the double girder maximizes hoist approach dimensions, as well as the height of the hook. And it's big enough to accommodate a maintenance platform for improved service access.



UNDER-RUNNING SINGLE-GIRDER CRANE

This crane is a good choice for facilities that want to free floor space of obstructions. Riding on the lower flange of a runway beam attached to the ceiling, it doesn't need any supportive floor columns. The hoist is allowed to travel very close to the end truck, but it also maximizes the bridge end approach towards the end of the runway. Due to its structure, the crane is typically limited to a maximum of 10 tons.

Hoist configurations

NORMAL HEADROOM

This strong and durable hoist for single girder cranes up to 40 tons features a safe and space-saving way of lifting high loads. True Vertical Lift reeving means minimal hook drifting.



LOW HEADROOM

This small and compact hoist gives the best possible approach dimensions. Ideal for heavy use without excessive wear, this high-tech hoist is reliable and robust.



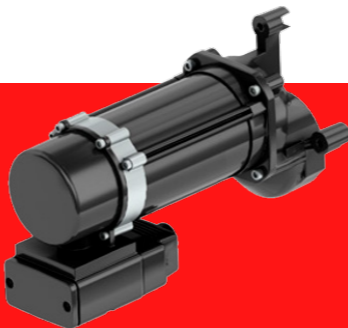
DOUBLE-GIRDER HOIST

This strong and durable hoist for loads up to 80 tons has options for True Lift and True Vertical lift for different reeving setups. It has a wide variety of features and motor types as well as compact outer dimensions.



FIXED HOIST

This hoist is a good option when you need to utilize existing structures. Delivered with a hook, it is typically attached to an existing platform or trolley. This stationary unit with a strong and reliable structure can support loads up to 80 tons.



COMPONENTS DEVELOPED AND MADE IN-HOUSE

All the core components are designed and manufactured by Konecranes, so you know that every crane component is fully compatible, and your equipment is reliable.



Get crane condition and usage information at your fingertips

Using TRUCONNECT Remote Monitoring on your CXT crane gives you insights into crane condition, usage and operation that can help you make informed maintenance decisions. Remote Monitoring can also be added to your other cranes as a retrofit for a comprehensive fleet view.

Flexibility for a wide range of industries

The CXT crane is ideal for up to 80 tons of lifting in almost any industrial setting—be it an assembly workshop, industrial plant, or anything in between. With our knowledge of industrial environments and processes, we can tailor the CXT crane to your needs.



NEO crane

This wire rope hoist crane is a special version of the renowned CXT crane. An agile and powerful machine, it can lift up to 80 tons, and with two hoists, up to 160 tons. Its ergonomic design and intuitive radio controls streamline operations with fast movement and accurate positioning. Multiple configurations allow flexibility for any kind of installation.

IDEAL FOR: General manufacturing, workshops and assembly lines



Gantry crane

Konecranes CXT gantry cranes are built for simplicity and maximum usability. With their specially designed steel structure—either semi or full gantry—they are ideal for many types of buildings and work areas both indoors and outdoors. A compact hoist makes the most of your existing workspace, providing an extensive work area around the crane.

IDEAL FOR: Aluminum production, automotive, aviation and aerospace, coal mining, general manufacturing and paper mills



Portable crane

The CXT Explorer is a transportable, cost-effective solution for all kinds of lifting. A simple yet innovative patented design, our popular CXT electric overhead crane is built into a tough steel structure atop a base of two standard ISO shipping containers. The result is a strong foundation under a powerful, adaptable and mobile crane that can lift up to 6.3 tons both indoors and outdoors.

IDEAL FOR: Construction, mining, vehicle maintenance, agriculture, natural gas compressor stations, oil exploration, onshore and offshore drilling



Wall console crane

Wall console cranes are ideal for work areas located adjacent to each other. The compact size allows the crane to squeeze into tight areas and they can be operated below overhead cranes, enabling several logistical flows in production areas. Wall console cranes can handle heavier loads when compared to standard workstation lifting systems and can be used as an auxiliary for larger overhead and gantry cranes, or by themselves in very limited space.

IDEAL FOR: Assembly lines, warehouses or other industrial areas



Jib crane

Konecranes jib cranes are vital to any production process requiring speed, accuracy and minimal downtime. Designed for a seamless user experience, these cranes are versatile, durable and serve almost any kind of workstation. They can provide support for overhead cranes on production lines, and help keep terminals, machining cells and warehouses operating smoothly.

IDEAL FOR: Terminals, machining cells, warehouses

Intelligent lifting with Smart Features

Konecranes CXT cranes are available with software-based intelligence—Smart Features—that give you total control over your process tasks. These features represent the most advanced crane technology on the market today. They can be added to your new Konecranes cranes and can also be installed on your existing Konecranes equipment.

Load control features

Smart Features help the crane maintain steady, smooth movement for maximum load control. This means more efficient and productive crane operations as well as increased safety for your operators and work environment.

- Advanced Speed Range (ASR)
- Assisted Load Turning
- Extended Speed Range (ESR)
- Follow Me
- Hoisting Synchronization
- Hook Centering
- Inching
- Load Floating
- Microspeed
- Shock Load Prevention
- Slack Rope Prevention
- Snag Prevention
- Sway Control and Active Sway Control

Area control features

Smart Features also give you more control over the working area of the crane, improving the efficiency and accuracy of load positioning by adapting the available space to the physical layout of your production line.

- End Positioning
- Protected Areas
- Target Positioning
- Working Limits



Learn more about Smart Features and see them in action



Maximize crane reliability and performance

You can maximize the lifecycle value of your CXT crane with a Konecranes service program that is tailored to your requirements. A program of regular inspections and preventive plus predictive maintenance supports compliance and helps identify risks and opportunities for improvement.

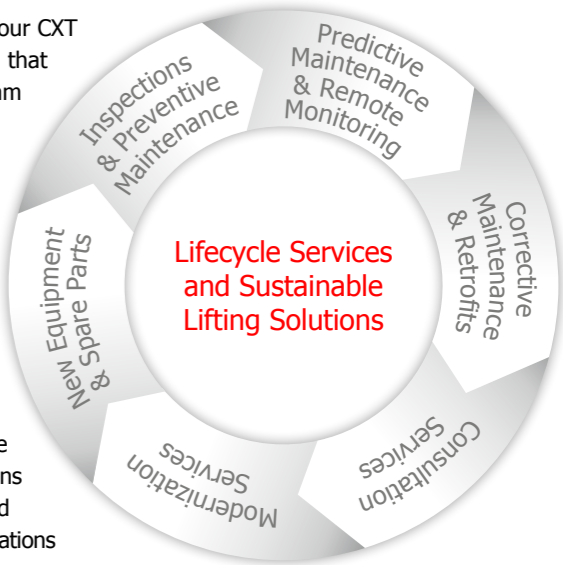
At Konecranes we take a comprehensive and systematic approach to managing customer assets throughout our Lifecycle Services. We don't just drop off a report on the way out, we consult with you to help guide your decision making. We share our findings, provide recommendations based on our industry-leading expertise and discuss how each action impacts your operations and the entire health of your business.

We have the largest and most extensive service network in the industry giving you the advantage of local inspectors and technicians with access to a wealth of knowledge gained from servicing hundreds of thousands of assets of all makes and models in a wide range of industries.

The power of data

When you have TRUCONNECT Remote Monitoring and/or a maintenance agreement with Konecranes you get access to the yourKONECRANES customer portal. The portal lets you quickly and easily see your crane maintenance information, asset condition and usage data, as well as an overview of findings in your fleet.

The data on yourKONECRANES can be viewed, analyzed and shared quickly helping you make informed maintenance decisions. TRUCONNECT safety alerts and condition status is available any time, any place and the information can help you act quickly on potential safety issues and plan your maintenance with minimal disturbance to production.



COMMITTED TO SUSTAINABLE LIFTING SOLUTIONS

Konecranes is committed to providing sustainable lifting solutions and services while preventing and minimizing emissions and waste. Lifecycle thinking combined with usability, eco-efficiency and safety guide us in the design of our products and services. Our aim is to maximize the lifecycle value of our products.





Konecranes is a world-leading group of Lifting Businesses, serving a broad range of customers, including manufacturing and process industries, shipyards, ports and terminals. Konecranes provides productivity enhancing lifting solutions as well as services for lifting equipment of all makes. In 2022, Group sales totaled EUR 3.4 billion. The Group has approximately 16,500 employees in around 50 countries. Konecranes shares are listed on the Nasdaq Helsinki (symbol: KCR).

© 2023 Konecranes. All rights reserved. 'Konecranes', 'Lifting Businesses' and  are either registered trademarks or trademarks of Konecranes.

This publication is for general informational purposes only. Konecranes reserves the right at any time, without notice, to alter or discontinue the products and/or specifications referenced herein. This publication creates no warranty on the part of Konecranes, express or implied, including but not limited to any implied warranty or merchantability or fitness for a particular purpose.



"Konecranes is a world leader in safety and the brand is known for its quality, reliable products. These qualities, plus their ability to meet all the customized needs of this project, were major factors in the decision to recommend Konecranes as the overhead crane equipment and service provider."

Paul Gurr, project manager, Sitzler, on Konecranes providing two CXT double-girder underslung cranes to safely and efficiently receive and install materials on the Space Surveillance Telescope in Exmouth, Australia

Read the story on konecranes.com