

KONECRANES S-SERIES CRANE

The new standard in lifting



Innovations that boost your production

The Konecranes S-series crane has set a new industry benchmark by introducing a never-before-seen synthetic rope hoist and Smart Features that improve safety and productivity.

Radically redesigned both inside and out, the S-series crane is designed to keep your production running smoothly.

Suitable for many types of applications
The S-series crane is a highly advanced lifting tool. With specially-tailored girder designs and hoist configurations, it suits a wide variety of industry applications and processes.

S-series hoist configurations



SINGLE-GIRDER HOISTS UP TO 12.5 TONS

The S-series single-girder crane is the right choice when you need a lifting capacity of up to 12.5 tons and want to maximize the working area underneath the crane. With only one bridge beam, the hoist operates or travels on the lower flange of the bridge girder and load handling is smooth and accurate.



DOUBLE-GIRDER HOISTS UP TO 20 TONS

The S-series double-girder crane is the right choice when you need a higher hook height for applications up to 20 tons. With two bridge beams the hoist travels on bridge girders attached to the top of or underneath the crane girder. A sturdy double-girder structure provides safe lifting in all kinds of industrial settings.



MACHINERY HOISTS UP TO 12.5 TONS

This is the right choice when you need a winch that can lift up to 12.5 tons. A typical application is raising or lowering huge objects such as a stadium score clock. As a winch-type system, the S-series machinery hoist does not contain a hook block by default but it can be provided if needed. A sturdy steel rope and a reliable hoist handles repetitive work easily.



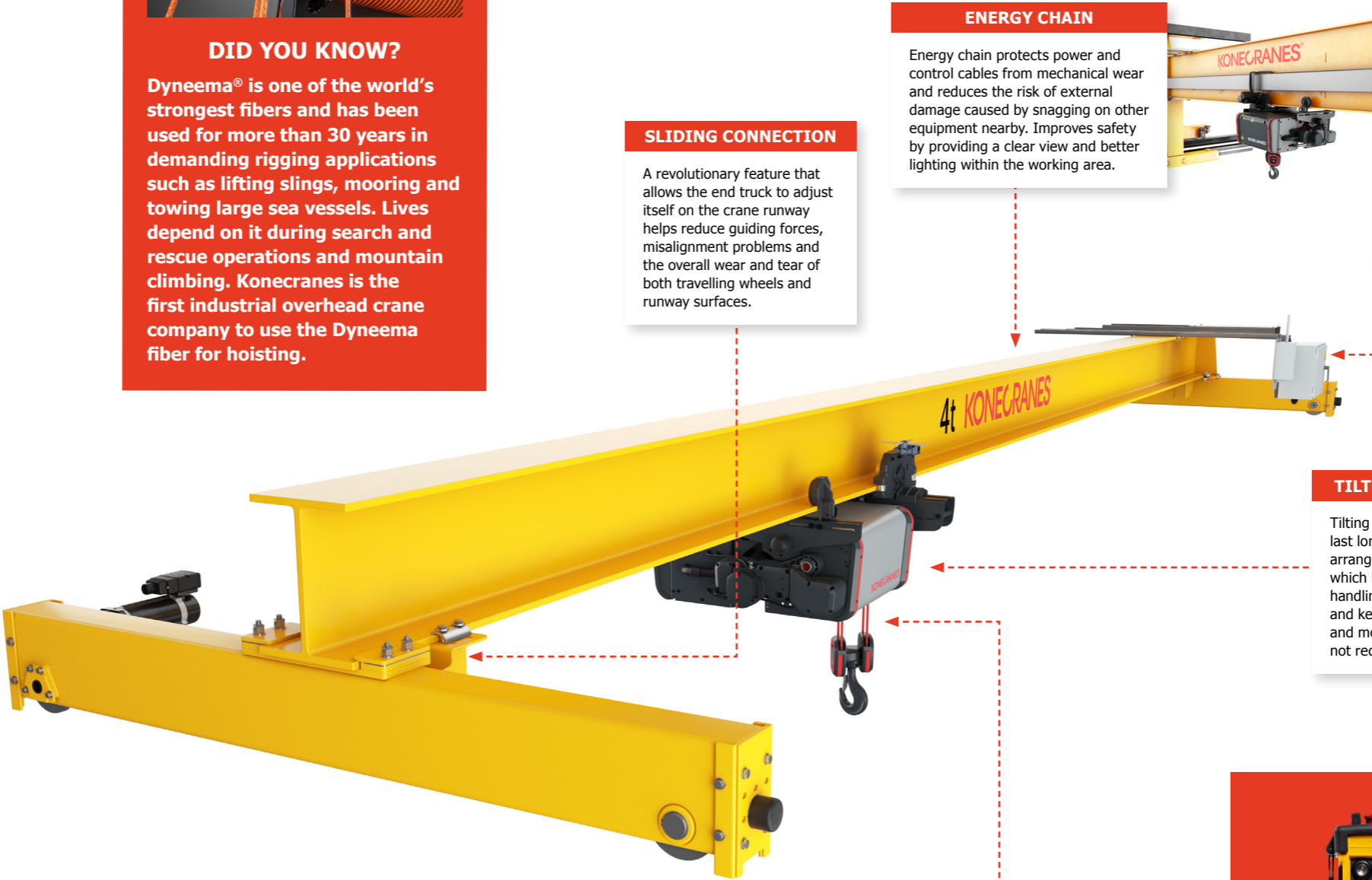
FIXED HOISTS UP TO 12.5 TONS

This is a good choice when you need to utilize existing structures. The fixed hoist is delivered with a hook and is usually attached to an existing platform or trolley. A fixed hoist is basically a double girder trolley but without the trolley, only hoisting machinery, electrical wiring, and the hook. The S-series fixed hoist is a stationary unit with a strong and reliable structure that supports loads of up to 12.5 tons.



DID YOU KNOW?

Dyneema® is one of the world's strongest fibers and has been used for more than 30 years in demanding rigging applications such as lifting slings, mooring and towing large sea vessels. Lives depend on it during search and rescue operations and mountain climbing. Konecranes is the first industrial overhead crane company to use the Dyneema fiber for hoisting.



SLIDING CONNECTION

A revolutionary feature that allows the end truck to adjust itself on the crane runway helps reduce guiding forces, misalignment problems and the overall wear and tear of both travelling wheels and runway surfaces.

ENERGY CHAIN

Energy chain protects power and control cables from mechanical wear and reduces the risk of external damage caused by snagging on other equipment nearby. Improves safety by providing a clear view and better lighting within the working area.

ASR INVERTER HOISTING

Inverter hoisting provides accurate load positioning and controlled slow-speed operation. The inverter enables stepless hoisting for very slow speeds which is crucial when handling heavy loads. It also improves efficiency by providing up to 50% faster lifting with light loads or an empty hook. Soft start-ups reduce the stress affecting the crane and its structure which means a longer lifetime for your crane and lower lifecycle costs.

TILTED DRUM WITH OFFSET REEVING

Tilting reduces fleet angles so reeving components last longer. The hook position and reeving arrangement prevent the ropes from crossing which helps reduce rope wear and improve load handling; decrease frame twist, wear and fatigue; and keep the trolley steady with a much lighter and more balanced wheel load. The drum does not require lubrication.

SYNTHETIC ROPE

Synthetic rope reduces wear on the drum and reeving components due to less surface pressure and friction. It is more durable than steel wire and does not require lubrication, reducing maintenance costs. It is easy to handle due to its lighter weight, and it does not fray or produce the sharp barbs common on steel wire rope which reduces the chance of hand injuries. Synthetic rope does not bend, birdcage or kink, minimizing replacement costs and maximizing productivity.



Remote control

TOTAL LOAD CONTROL

The S-series radio controls are easy and comfortable to use and allow the operator to work at a safe distance away from the load. They also offer high accuracy and smooth load positioning thanks to stepless speed control. If needed, an optional backup pendant is available.



Smart Features

Our Smart Features technology improves safety and usability. In load control, it helps the crane operator position the load quickly and accurately, reducing cycle times and improving productivity.

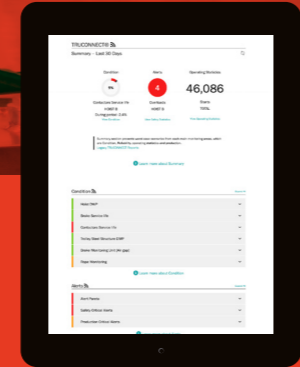
The S-series offers the following integrated Smart Features:

Snag Prevention stops crane movement if the hook, sling or load accidentally gets caught on another object. It helps prevent damage to the load, crane and other machinery.

Hook Centering eliminates side pull during lifting by positioning the bridge and trolley directly over the load. This reduces wear and tear on components, speeds up load cycle times and simplifies operation.

Follow Me lets the operator manually guide the hook to any desired location helping improve cycle times and hook accuracy. Once the feature is activated, the crane intuitively follows the hook making it quick and easy to move the empty hook or light loads giving you more efficient material handling.

Optional Smart Features Sway Control, Microspeed, Load Floating and many other features are also available. Ask our sales team which features would be best for your operations.



CRANE CONDITION AND USAGE INFO AT YOUR FINGERTIPS

Using TRUCONNECT Remote Monitoring on your S-series crane gives you insights into crane condition, usage and operation that can help you make informed maintenance decisions. Remote Monitoring can also be added to your other cranes as a retrofit for a comprehensive fleet view.



Facts at glance – S-series

FEATURES	SPECIFICATIONS
LIFTING CAPACITY	Up to 20 tons
LIFTING HEIGHT	36 m
SPAN	30 m
CRANE OPTIONS	Single and double girder, top and under-running
GIRDER DESIGN	Profile, box, compact box
ROPE	Synthetic rope default, steel wire rope option
HOISTING MOTOR	Stepless inverter hoisting default, 2-speed hoisting option
TEMPERATURE	Standard temperature: +5 ... +40°C.
PAINT	Anodized aluminium frame painted with 70 µm epoxy powder
HOOKS	DIN 15401
TROLLEY TYPE	Single or double girder hoists, machinery hoist and fixed hoist
POWER SUPPLY	Energy chain or flat cables
CONTROL OPTIONS	Radio, pendant as an option/backup
INTEGRATED SMART FEATURES	<ul style="list-style-type: none">Hook CenteringSnag PreventionFollow Me
ENVIRONMENT	Indoor or outdoor

FEATURE	SYNTHETIC ROPE	STEEL WIRE ROPE
MATERIAL	High performance synthetic	High strength steel
BREAKING STRENGTH	Very high: consistently exceeds 5:1	High: meets or exceeds 5:1
WEIGHT	Light – 80% lighter than steel	Heavy
KINK RESISTANCE	Will not kink	Will kink and requires replacement
RESISTANCE TO BENDING	Returns to original shape with no permanent damage	Will bend and deform, requires replacement
BIRD CAGE RESISTANCE	Returns to original shape with no permanent damage	Will bird cage and deform, requires replacement
LUBRICATION	Not required	Regular lubrication required
SAFETY	Synthetic rope does not barb, and is lightweight and flexible, reducing the chance of cuts to hands or ergonomic injury during rope handling	Steel wire can fray and is heavy and rigid, increasing the risk of hand lacerations or ergonomic injury during rope handling

S-series for different industries

Ground-breaking features on the S-series crane make it a precise, flexible lifting tool with a wide range of potential applications in many different industries, including:

General manufacturing Manufacturing facilities must maintain a constant process flow—from incoming prefab or raw materials all the way to packaging and shipping. When any interruption is a production loss, the right lifting equipment will help keep your manufacturing workflow running. The S-series is a robust and reliable crane that also provides the high accuracy needed for assembly work.

Automotive Advanced Speed Range (ASR) and Smart Features increase speed and accuracy while optimizing material handling and safety in critical automotive processes. Snag Prevention or Hook Centering reduces the risk of collision with equipment or operators nearby. Follow Me makes moving the empty hook or light loads fast, which speeds up material handling.

Metals and steel In challenging environments full of dust and heat, production must run smoothly without unplanned interruptions. As a service crane, the S-series is safe, reliable and easy to use, giving operators the freedom to concentrate on maintenance tasks.

Paper and forest In paper mills load handling is demanding so it is important that equipment is available whenever needed. Maintenance cranes are a critical part of the process and the S-series is an ideal service crane—reliable and easy to use for all kinds of maintenance tasks. Because the drum and synthetic rope do not require lubrication, the process area stays clean.

A hoist for many cranes

You can use the S-series hoist on many different types of cranes, depending on your specific requirements. It's designed to improve the safety and productivity of your production flow.



S-SERIES JIB CRANE

Jib cranes are integral to any production process that requires both speed and accuracy. Designed for flexibility, durability and operator comfort, you can easily install a jib crane in a key position and later relocate it when your work environment changes. It can use a wide selection of hoists including the S-series.

S-SERIES GANTRY CRANE

When a traditional overhead crane is not suitable, a gantry crane with specially designed steel structures is ideal. It maximizes your operating area, especially when you place cranes at different levels. The S-series hoist adds extra performance and safety to your gantry crane.

S-SERIES WALL CONSOLE CRANE

Wall console cranes can be used to transport materials to specialized workstations, and to handle components inside assembly cells. They operate below overhead cranes, managing logistics flows in production areas. The S-series hoist is an ideal choice for wall console cranes.



S-SERIES SINGLE-GIRDER CRANE

A single-girder S-series crane, with the hoist on a box or profile girder, is ideal for loads up to 12.5 tons. Its compact size and small approach dimensions allow you to make the most of the working area underneath the crane. Lightweight means less stress on your building structure, which is ultimately more cost efficient.

S-SERIES DOUBLE-GIRDER CRANE

A double-girder S-series crane, with the hoist above the two main girders, is the best choice for heavier loads and longer spans. A capacity of up to 20 tons allows higher duty classes, while the double girder maximizes trolley approach dimensions as well as the height of the hook. And it's big enough to accommodate a maintenance platform to improve service access.

S-SERIES UNDER-RUNNING CRANE

An under-running S-series crane is a good choice for facilities that want to free floor space of obstructions. These cranes usually travel on the lower flange of a runway beam attached to the ceiling, with no need for supportive floor columns. The hoist can get very close to the end truck, maximizing the bridge end approach towards the end of the runway. Its structure limits the crane to a maximum load of 10 tons.

Maximize crane reliability and performance

You can maximize the lifecycle value of your S-series crane with a Konecranes service program that is tailored to your requirements. A program of regular inspections and preventive plus predictive maintenance supports compliance and helps identify risks and opportunities for improvement.

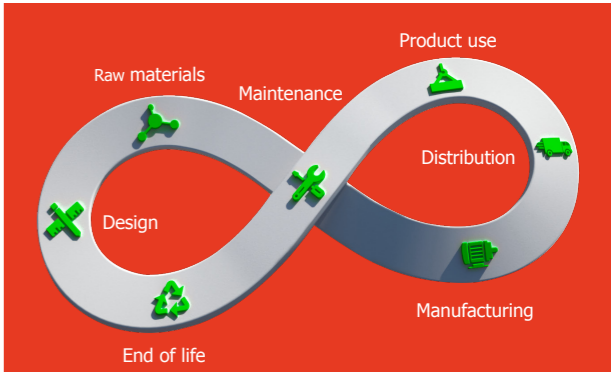
At Konecranes we take a comprehensive and systematic approach to managing customer assets throughout our Lifecycle Services. We don't just drop off a report on the way out, we consult with you to help guide your decision making. We share our findings, provide recommendations based on our industry-leading expertise and discuss how each action impacts your operations and the entire health of your business.

We have the largest and most extensive service network in the industry giving you the advantage of local inspectors and technicians with access to a wealth of knowledge gained from servicing hundreds of thousands of assets of all makes and models in a wide range of industries.

The power of data

When you have TRUCONNECT Remote Monitoring and/or a maintenance agreement with Konecranes you get access to the yourKONECRANES customer portal. The portal lets you quickly and easily see your crane maintenance information, asset condition and usage data, as well as an overview of findings in your fleet.

The data on yourKONECRANES can be viewed, analyzed and shared quickly helping you make informed maintenance decisions. TRUCONNECT safety alerts and condition status is available any time, any place and the information can help you act quickly on potential safety issues and plan your maintenance with minimal disturbance to production.



COMMITTED TO SUSTAINABLE LIFTING SOLUTIONS

- Konecranes is committed to providing customers with sustainable solutions and services while minimizing emissions and waste.
- Usability, eco-efficiency and safety are the guiding principles in our product design along with lifecycle thinking.
- Our aim is to maximize the lifecycle value of our products.



Konecranes is a world-leading group of Lifting Businesses, serving a broad range of customers, including manufacturing and process industries, shipyards, ports and terminals. Konecranes provides productivity enhancing lifting solutions as well as services for lifting equipment of all makes. In 2022, Group sales totaled EUR 3.4 billion. The Group has approximately 16,500 employees in around 50 countries. Konecranes shares are listed on the Nasdaq Helsinki (symbol: KCR).

© 2023 Konecranes. All rights reserved. 'Konecranes', 'Lifting Businesses' and  are either registered trademarks or trademarks of Konecranes.

This publication is for general informational purposes only. Konecranes reserves the right at any time, without notice, to alter or discontinue the products and/or specifications referenced herein. This publication creates no warranty on the part of Konecranes, express or implied, including but not limited to any implied warranty or merchantability or fitness for a particular purpose.

SEE SMART FEATURES IN ACTION



FOLLOW ME

bit.ly/smart-feature-follow-me



SNAG PREVENTION

bit.ly/smart-feature-snag-prevention



HOOK CENTERING

bit.ly/smart-feature-hook-centering



CONTACT US TODAY

bit.ly/konecranes-contact-us

