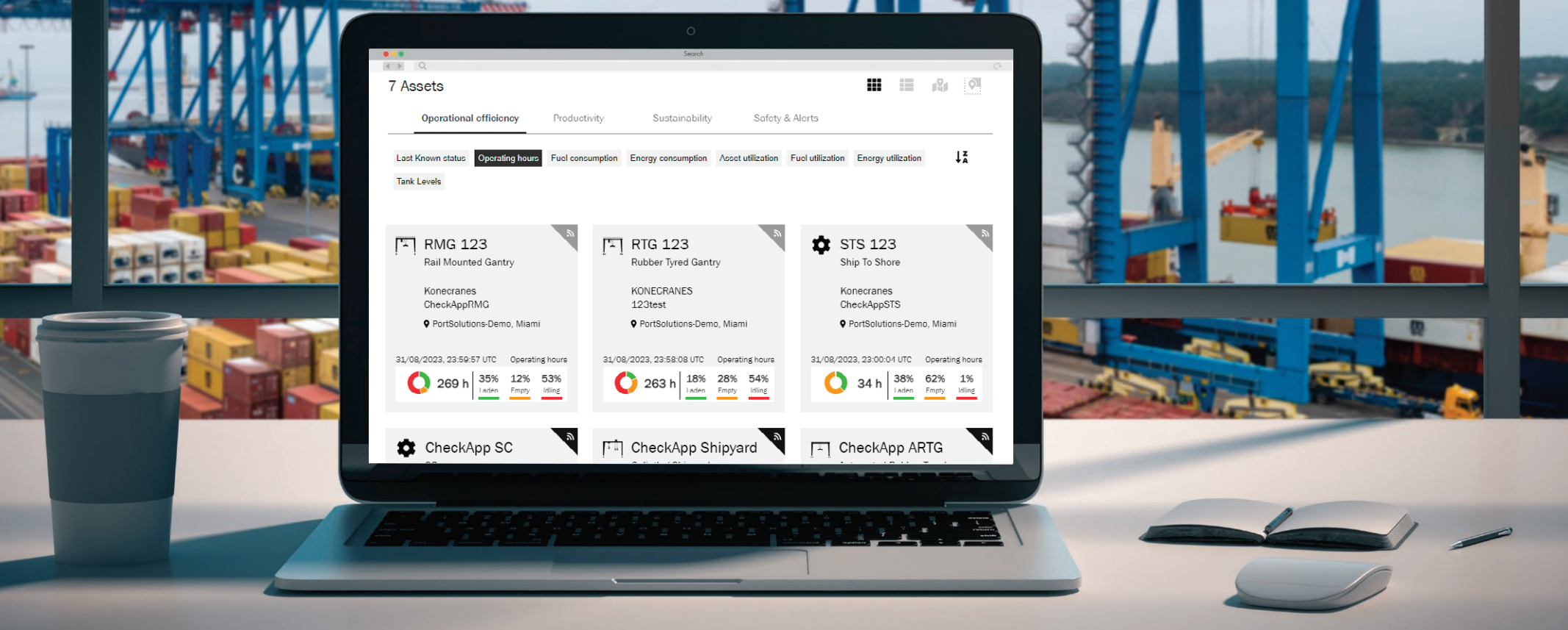


Get the insight to improve the performance of your fleet.

YourKONECRANES Self-Service Digital Portal



Fleet management just got an upgrade: A single, powerful portal that delivers clear, actionable insight into the performance of yourKONECRANES fleet.

What is yourKONECRANES?

yourKONECRANES is an online self-service portal enabling Konecranes customers to manage all their Konecranes digital services and connected assets from one easy-to-use dashboard.

Through the portal you can access:

- TRUCONNECT®-enabled equipment data
- All digital tools and subscriptions
- Each asset’s documentation
- Spare parts online store



Equipment Applicability

RTG
Rubber-Tired Gantry Crane

RMG
Rail-Mounted Gantry Crane

STS
Ship-to-Shore Crane

SY
Shipyards Crane

MHC
Mobile Harbour Crane

LT
Lift Truck

SC
Straddle Carrier

Features

- **Asset utilization**
Visibility on how much the assets are working (laden, empty, idle) and relevant KPIs. Machinery running hours and starts.
- **Load**
Relevant load and production data (weights, container moves, load spectrum)
- **Diagnostics**
Faults and alarms statistics. Individual diagnostics also available for events and by-passes.
- **Fuel consumption**
Consumption data and KPIs (total, average, utilization, tank levels)*
- **Energy consumption**
Consumption data and KPIs (total, average, utilization)*
- **Tyre pressure**
Visibility on tyre pressure data*
- **Travel distance and speeds**
Data on travel distance (laden, empty) as well as speed spectrum*
- **BMU (Break Monitoring Unit)**
Break monitoring statistics*

*May vary depending on the equipment type and data availability

Benefits

- **Improved maintenance planning:**
Visibility to relevant data insights to assist maintenance scheduling based on the real usage of an asset.
- **Increased visibility on production:**
Production data and KPIs help to detect patterns and anomalies to help make improvements on productivity.
- **Increased efficiency:**
Available consumption data and KPIs, visibility to all relevant documentation within a single system.
- **Improved safety and troubleshooting:**
Each fault and alarm has a diagnostic context, leading to better decision-making and safer operations.



What you need to know

- Requires TRUCONNECT® system to be installed on asset to allow data flow through the cloud
- Requires a subscription to receive the full visibility to the data
- Needs working connectivity to receive the latest data from the asset
- Certified with ISO27001 – Information Security Management.



Ports. Evolved.



Konecranes is a global leader in material handling solutions, serving a broad range of customers across multiple industries. We consistently set the industry benchmark, from everyday improvements to the breakthroughs at moments that matter most, because we know we can always find a safer, more productive and sustainable way. That’s why, with around 16,600 professionals in over 50 countries, Konecranes is trusted every day to lift, handle and move what the world needs. In 2023, Group sales totalled EUR 4.0 billion. Konecranes shares are listed on Nasdaq Helsinki (symbol: KCR).

© 2023 Konecranes. All rights reserved. 'Konecranes', 'Moves what matters' and are either registered trademarks or trademarks of Konecranes.

This publication is for general informational purposes only. Konecranes reserves the right at any time, without notice, to alter or discontinue the products and/or specifications referenced herein. This publication creates no warranty on the part of Konecranes, express or implied, including but not limited to any implied warranty or merchantability or fitness for a particular purpose.