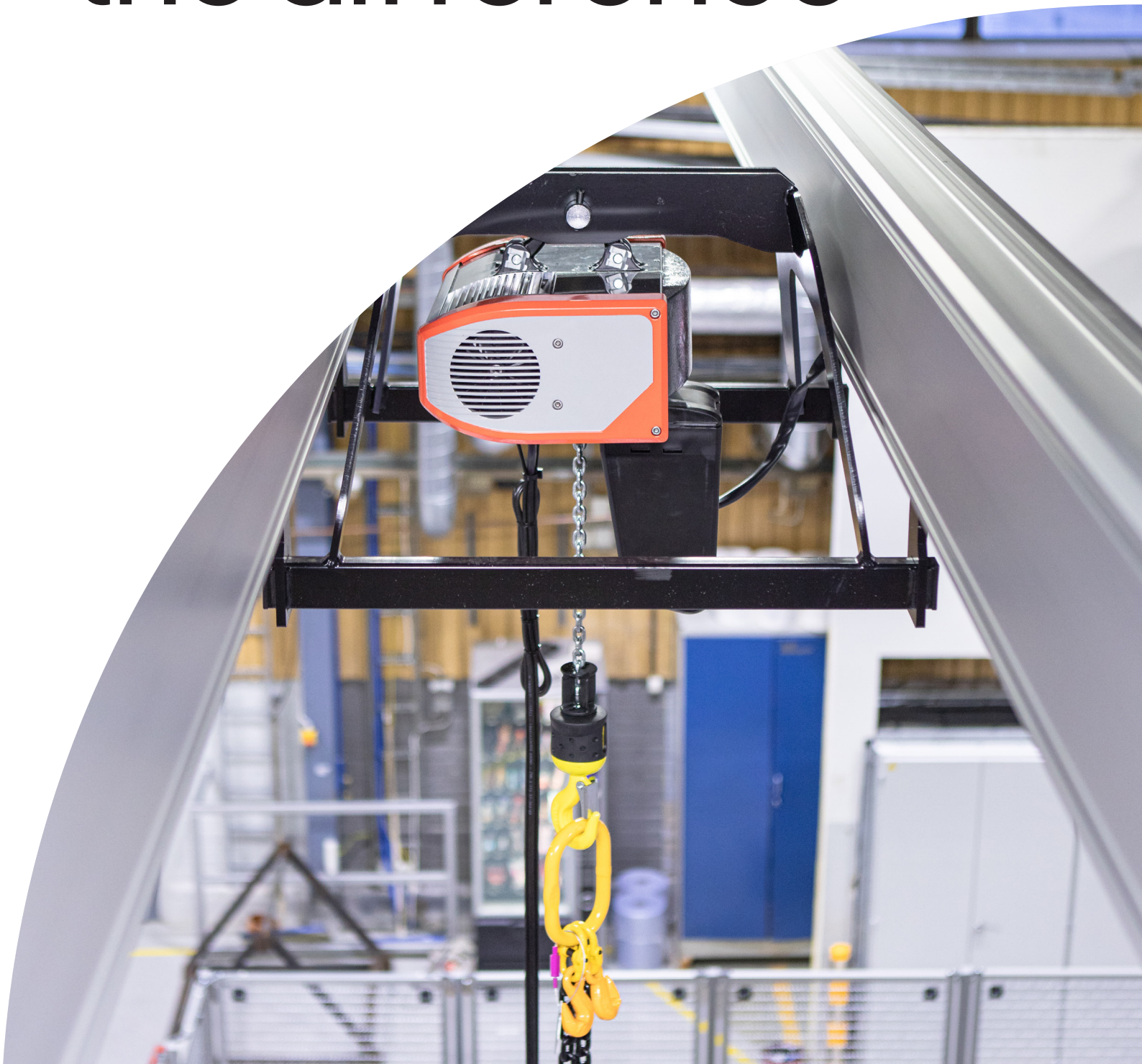


# Experience the difference



# Efficient performance

The Konecranes C-series is our most advanced electric chain hoist to date

Built smart with the toughness, precision and reliability of our Core of Lifting components, it is designed for more than a million operations. The Konecranes C-series hoist gives you the ultimate in usability, performance and lifecycle value.

## Boost your productivity

The Konecranes C-series is a productive lifting partner that will meet the demands of applications lifting loads from as little as 63 kg, all the way up to 5,000 kg. Its Core of Lifting components—designed and manufactured by Konecranes—include a purpose-built motor, controls and gearbox. The Konecranes C-series enhances the operator experience, boosts productivity and increases long-term reliability with minimal scheduled maintenance.

### 01 VERSATILE BRACKET

Standard design allows adaptation to a variety of suspensions and is easier and safer to install than a traditional hook suspension.

### 02 SLIPPING CLUTCH

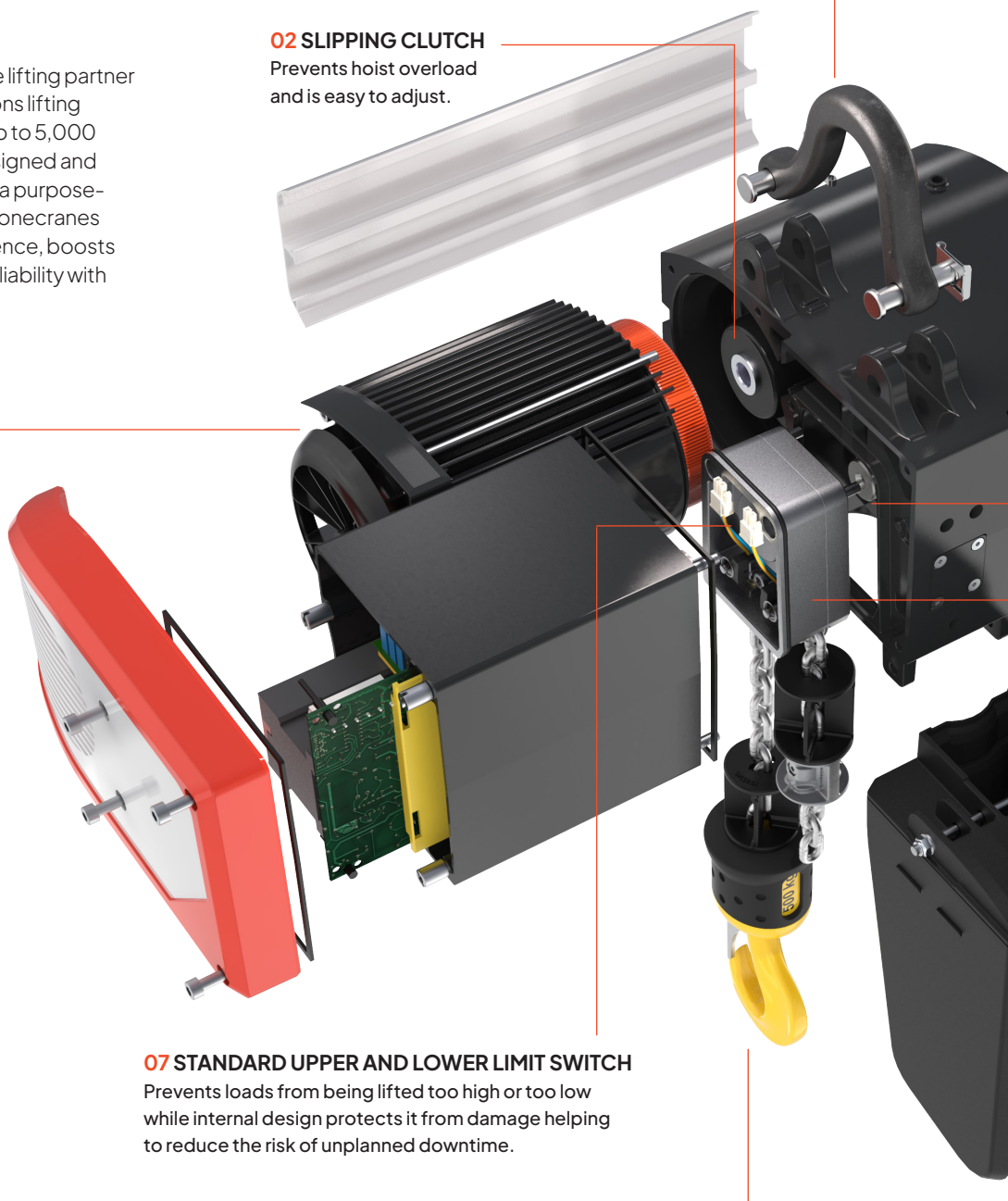
Prevents hoist overload and is easy to adjust.

### 08 HIGH-QUALITY MOTOR

Purpose built for hoisting, standard overheating protection and fan cooling increase performance and long-term reliability.

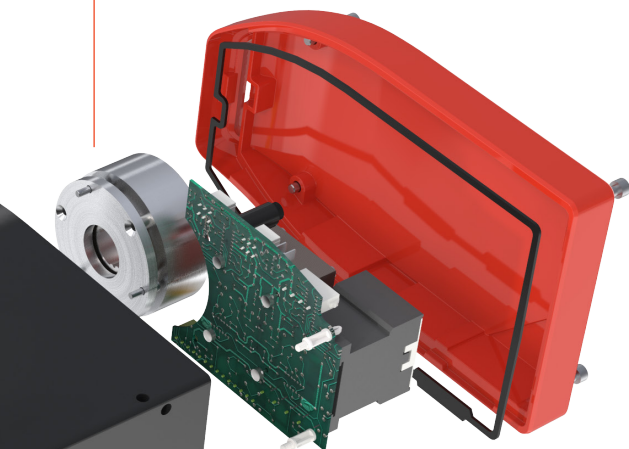
### 07 STANDARD UPPER AND LOWER LIMIT SWITCH

Prevents loads from being lifted too high or too low while internal design protects it from damage helping to reduce the risk of unplanned downtime.



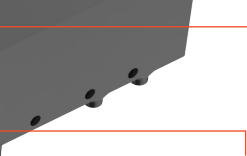
### 03 SELF-ADJUSTING BRAKE

On the opposite side of the gearbox and on its own load path, it combines low maintenance with increased safety and long-term reliability.



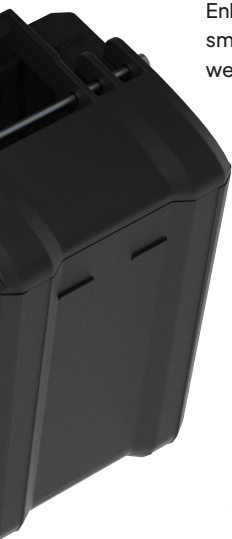
### 04 PRECISION GEARS

Lifetime lubrication gives you enhanced performance and no scheduled maintenance.



### 05 OPTIMIZED CHAIN DRIVE

Enhanced sprocket and chain pairing gives smooth operation and reduces friction and wear, extending long-term performance.

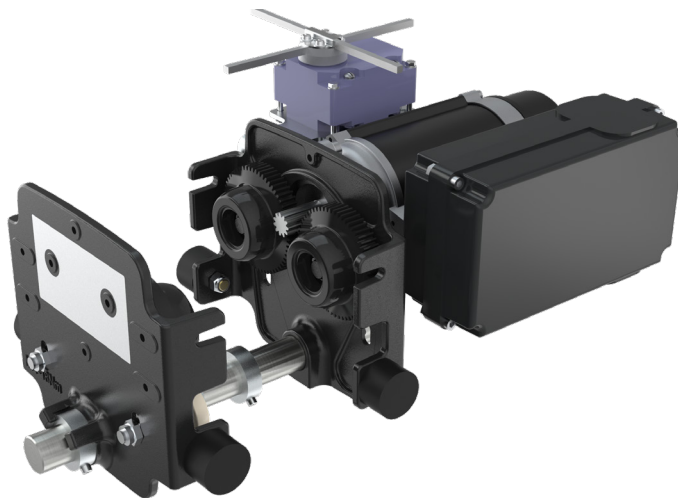


### 06 ERGONOMIC HOOK DESIGN

Light hook and non-slip coating improve operator comfort and safety.

### FLEXIBLE TROLLEY

Modular design for manual or motorized operation and easily adjustable for a wide range of flange widths.



## Ideal for many different industrial applications

### Manufacturing and assembly

Assembly lines consist of several subsequent steps. Products move rapidly from one step to the next as they are put together. Good planning positions lifting devices carefully above each workstation, using space and time efficiently. Lightweight hooks allow easy manipulation.

### Processes

Process applications are different to assembly environments and resistance against humidity, dust and temperature may be necessary. When C-series hoists are used for maintenance, they may be used less, but they are reliable and ready at a moment's notice.



# Versatility for industrial applications and demanding workstations

Compact headroom, a suspension bracket and a range of other features make Konecranes C-series hoists easily adjustable to your specific workstation needs

## Different trolleys for different needs

Maximize safety and productivity with the right choice of trolley for your lifting needs.



Enclosed push trolley for manual operations in workstation cranes.



Push trolley for manual operations on I-beams.



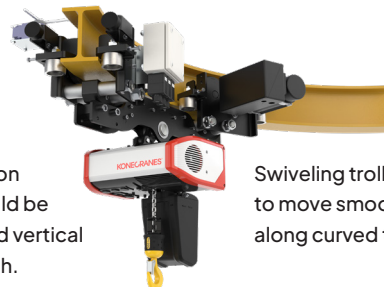
Motor trolley for powered operations.



Low headroom trolley when every centimeter of lifting height is critical.



Stationary installation when the hoist should be secured in place and vertical movement is enough.



Swiveling trolley to move smoothly along curved tracks.

## Different applications with standard hoist suspension

Whether you require precision, smooth motion, a high duty cycle or only occasional lifts, the Konecranes C-series electric chain hoist has the features and options to fit your application. Designed to adapt for a wide range of needs, the Konecranes C-series installs seamlessly on Konecranes-made equipment such as:



Jib cranes



Konecranes KBK steel workstation lifting system



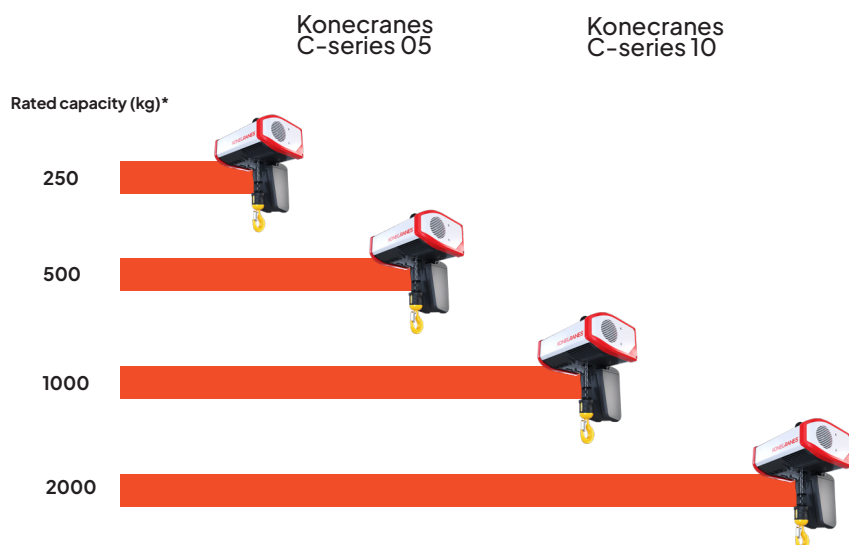
Konecranes KBK aluminum workstation lifting system



Overhead cranes



## Konecranes C-series facts at a glance



### NOTE:

Konecranes C-series 05: 250kg -500kg (1-reeving)

Konecranes C-series 10: 1000kg (1-reeving) and 2000kg tons (2-reeving)

STANDARD FEATURES	
Lifting height	Lifting heights up to 16 meters with 1/1 reeving, 8 meters with 2/1 reeving
Lifting speed	Dual speed hoisting with 4:1 speed ratio ranging from 1.2 m/m to 9.6m/min
Duty classes	Up to FEM 3m / ISO M6
Motor type	Motors with TEFC classification, insulation class H, thermal protection
Voltages range	208-575 main voltage, 115v control voltage, 60Hz
Overload protection	With a slipping clutch
Surface treatment	Hoist body with epoxy powder paint (70µm thickness, C2-M)
Chain type	Zinc plated and case hardened chain (class DAT)
Emergency stop	Push button on pendant or radio controller
Hoisting limits	Mechanical upper and lower limit switches
Protection class	IP66
Operating temperature	With rated load and speed: -20°C to +40°C (to +50°C with lower performance values)
Controllers	Pendant as a standard and radio as an option

\* Extensive set of optional features to fulfill all kinds of lifting needs e.g. bigger lifting heights





# The latest in safety and productivity

The Konecranes C-series electric chain hoist features ergonomic design updates for improved safety and productivity. Intuitive controls enable smooth and efficient operation, with less operator fatigue or chance of human error.

A cleverly shaped hoist and bracket gives the Konecranes C-series an optimal position, bringing more control and mobility to the working area. The slipping clutch helps prevent dangerous overloads, and being located on the opposite side of the gearbox to the brake eliminates micro-slipping. The robust design of the hoisting limit switches and emergency stop provide even more safety and usability.

## **Even more features with inverter control**

For loads up to 2,500 kg, an inverter hoist can further enhance safety and productivity. Stepless hoisting is just the first in a wide range of standard Smart Features. Slack Chain Control and Shock Load Prevention provide smooth lifting movements while protecting product, equipment and people.

Extended Speed Range (ESR) allows faster speeds and better process efficiency with lighter loads or an empty hook. Programmable limits increase safety, optimize the lifting range and speed up cycle times. Inverter hoists are ideal partners for precise assembly work and sensitive parts handling.



# Maximize reliability and performance

The Konecranes C-series hoist may require less maintenance, but that doesn't mean you can skip it altogether. A program of regular inspections and preventive maintenance supports compliance and helps identify risks and opportunities for improvement.

At Konecranes we take a comprehensive and systematic approach to managing customer assets throughout our Lifecycle Services. We don't just drop off a report on the way out, we consult with you to help guide your decision making. We share our findings, provide recommendations based on our industry-leading expertise and discuss how each action impacts your operations and the entire health of your business.

We have the largest and most extensive service network in the industry giving you the advantage of local inspectors and technicians with access to a wealth of knowledge gained from servicing hundreds of thousands of assets of all makes and models in a wide range of industries.



Learn more about Konecranes Service:  
[konecranes.com/service](https://konecranes.com/service)



## Maintenance made easy

- The Konecranes C-series hoist is built for easy installation and serviceability.
- A lifetime lubricated gearbox and self-adjusting magnetic brake help reduce your maintenance downtime.
- Easily find spare parts for all crane makes and models online at [store.konecranes.com](https://store.konecranes.com).



Konecranes is a global leader in material handling solutions, serving a broad range of customers across multiple industries. We consistently set the industry benchmark, from everyday improvements to the breakthroughs at moments that matter most, because we know we can always find a safer, more productive and sustainable way. That's why, with around 16,800 professionals in over 50 countries, Konecranes is trusted every day to lift, handle and move what the world needs. In 2024 Group sales totalled EUR 4.2 billion. Konecranes shares are listed on Nasdaq Helsinki (symbol: KCR).

© 2024 Konecranes. All rights reserved. 'Konecranes,' 'Moves what matters' and  are either registered trademarks or trademarks of Konecranes.

This publication is for general informational purposes only. Konecranes reserves the right at any time, without notice, to alter or discontinue the products and/or specifications referenced herein. This publication creates no warranty on the part of Konecranes, express or implied, including but not limited to any implied warranty or merchantability or fitness for a particular purpose.

**KONECRANES** Moves what matters.