

The next evolution in lifting



Introducing the Konecranes X-series crane

With new features and functionalities this crane will help boost your safety and productivity in a smart, connected way.



Lean, mean, smart machine

Our revolutionary Konecranes X-series crane combines forward-thinking design and cutting-edge technology for a crane that is not only safe, compact and reliable but can easily adapt to your needs—now and in the future—while providing maximum value for your investment.

The Konecranes X-series crane was designed with usability in mind—stepless control and Smart Features mean safer and more accurate lifting and the radio with integrated display gives operators free movement and useful information right at their fingertips.

The crane boasts lean, state-of-the-art electrical architecture. Smart, connected components streamline crane software setup and make it possible to later upgrade the crane with new features “over the air” without hardware changes—something

that has yet to be seen in the standard crane industry.

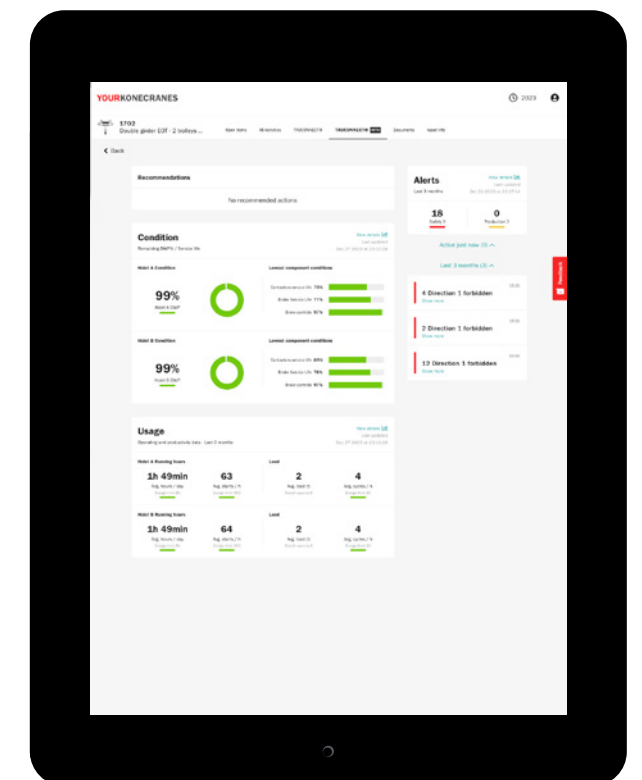
TRUCONNECT Remote Monitoring provides crane condition, usage and operating information and supports predictive maintenance to help reduce unplanned downtime and improve equipment safety, productivity and lifecycle value. Maintenance and software updates are made easier and more efficient for technicians using the SmartConnect app from the floor without having to get on the crane.

The power of data

TRUCONNECT Remote Monitoring provides the visibility you need to fully understand the day-to-day use of your cranes. Your TRUCONNECT data combined with inspection and maintenance information can help you make informed decisions on maintenance, safety concerns, productivity, training, and service and equipment investments.

You can see your TRUCONNECT data summarized in easy-to-read graphs and charts on the **Konecranes Portal**. If you have a Konecranes service agreement you can also see reports from your service visits, open safety and production risks and even an overview of spend by service type.

TRUCONNECT data can alert you to problems with your cranes before they give way to critical issues that can impair safety and performance, helping you plan and leaving less room for surprises. Analyzing TRUCONNECT data can also help you develop an operational baseline and identify opportunities for maintenance and process improvements.



A great crane needs a great hoist

What makes the Konecranes X-series crane even more remarkable is the new **Konecranes S-series low headroom hoist**. This compact hoist boasts excellent approach dimensions and smooth stepless lifting with load dependent lifting motor for the ultimate user experience and shorter cycle times.

Strong, lightweight, durable and clean synthetic rope improves the lifting experience by making it safer and easier to handle because it doesn't fray or produce sharp barbs like steel wire rope.

The hoist also features integrated Smart Features to enhance your safety and help increase productivity with shorter load cycle times—especially useful for inexperienced crane operators. Safety also gets a boost from a safety light on the trolley that provides a visual signal of crane movement in the workspace to nearby personnel.

Ergonomic, user-friendly radio with display
Radio controls can improve operator safety and efficiency. The Konecranes X-series crane radio has an easy-to-read display that indicates the lifted load, active Smart Features, battery life and other useful information. True stepless buttons help increase safety and accuracy, especially during slow and demanding lifting operations.

Operators using radio controls aren't tied to the load being lifted, this lets them choose the safest place to operate the crane and gives them better load visibility. And having load display in the operator's hands provides visual confirmation of the load to help prevent overloads.

With greater flexibility and improved user ergonomics operators can manage the load more precisely and swiftly so load handling becomes more efficient.



01 COMPACT ROPE HOIST
The compact and robust Konecranes S-series low headroom hoist ensures optimal approach dimensions for both directions in the crane.

02 SAFETY LIGHT
The safety light provides a visual warning on the floor of the trolley location to operators and other personnel in the work area.

07 INTEGRATED DISPLAY
Radio shows load display, indicates battery life and makes it easy to select different advanced features.

08 STEPLESS CONTROL
True stepless control for crane movements provides maximum accuracy and safety.

03 NEW MECHANICAL FEATURES
The thrust rocker and optional belt transmission make the trolley strong and stable and provide a more streamlined and sustainable design. The thrust rocker also helps distribute the load evenly across multiple wheels and eliminates the need for counterweights.

04 SYNTHETIC ROPE
Synthetic rope is as strong as steel rope, and in many cases more durable because it is not vulnerable to traditional rope defects. Synthetic rope doesn't require lubrication and there is reduced wear on the drum and reeving components due to less surface pressure and friction—this helps you save on maintenance costs.

05 FINGER PROTECTION
The hook block boasts improved finger protection and has a finger pocket that makes it safer and easier to grab when using features like Follow Me.

06 DIN HOOK
The hook is manufactured to meet strict safety standards.

Konecranes X-series crane specifications

FEATURES	SPECIFICATIONS
Lifting capacity	Up to 20 tons
Lifting height	36m
Span	30m
Crane options	Single, double girder and under-running (not available with monorails)
Girder design	Profile, box
Rope	Synthetic or steel rope
Hoisting motor	Stepless, 2-speed
Temp. range	+5°C...+40°C
Environment	Indoors (scope will be expanded)
Voltage	380-415 V / 48 V / 50 HZ, IEC
Hooks	DIN 15401
Trolley type	Low headroom, normal headroom, double girder
Power supply	Energy chain or flat cables
Control option	Radio, pendant
Control system	Stepless inverter hoisting and traveling movements
Optional	<ul style="list-style-type: none">Collision avoidanceSmart Features such as Sway ControlRope Angle Features including Hook Centering, Follow Me and Snag PreventionTRUCONNECT Remote MonitoringCrane tandem

Core of Lifting: Experience in action

The design of the Konecranes X-series crane is backed by more than 80 years of crane and industry expertise. We design and manufacture the key components of our equipment—gears, motors and controls—specifically for crane use and lifting motions. These components work seamlessly together as the Core of Lifting.



Maximize crane reliability and performance

An active service program is vital for the safety and productivity of your cranes

Regular inspections and preventive maintenance help identify risks and opportunities for improvement while supporting compliance with safety regulations.

Service programs tailored to your operations

Preventive maintenance conducted at regularly scheduled intervals can often be the most effective way to maintain and potentially extend the lifespan of your cranes. Konecranes experts can help you build a service program—from basic inspections to a comprehensive maintenance program—tailored to your operations.

The right parts at the right time

Keeping parts in inventory, especially in process-critical operations, can further reduce downtime when performing maintenance or repairs. Our parts experts can provide you with a comprehensive parts package specifically designed according to your application and usage requirements.

Why choose Konecranes as your crane service provider?

We have the largest and most extensive service network in the industry, servicing hundreds of thousands of assets each year of all different makes and models. You get the advantage of local inspectors and technicians with access to a wealth of knowledge from around the globe.

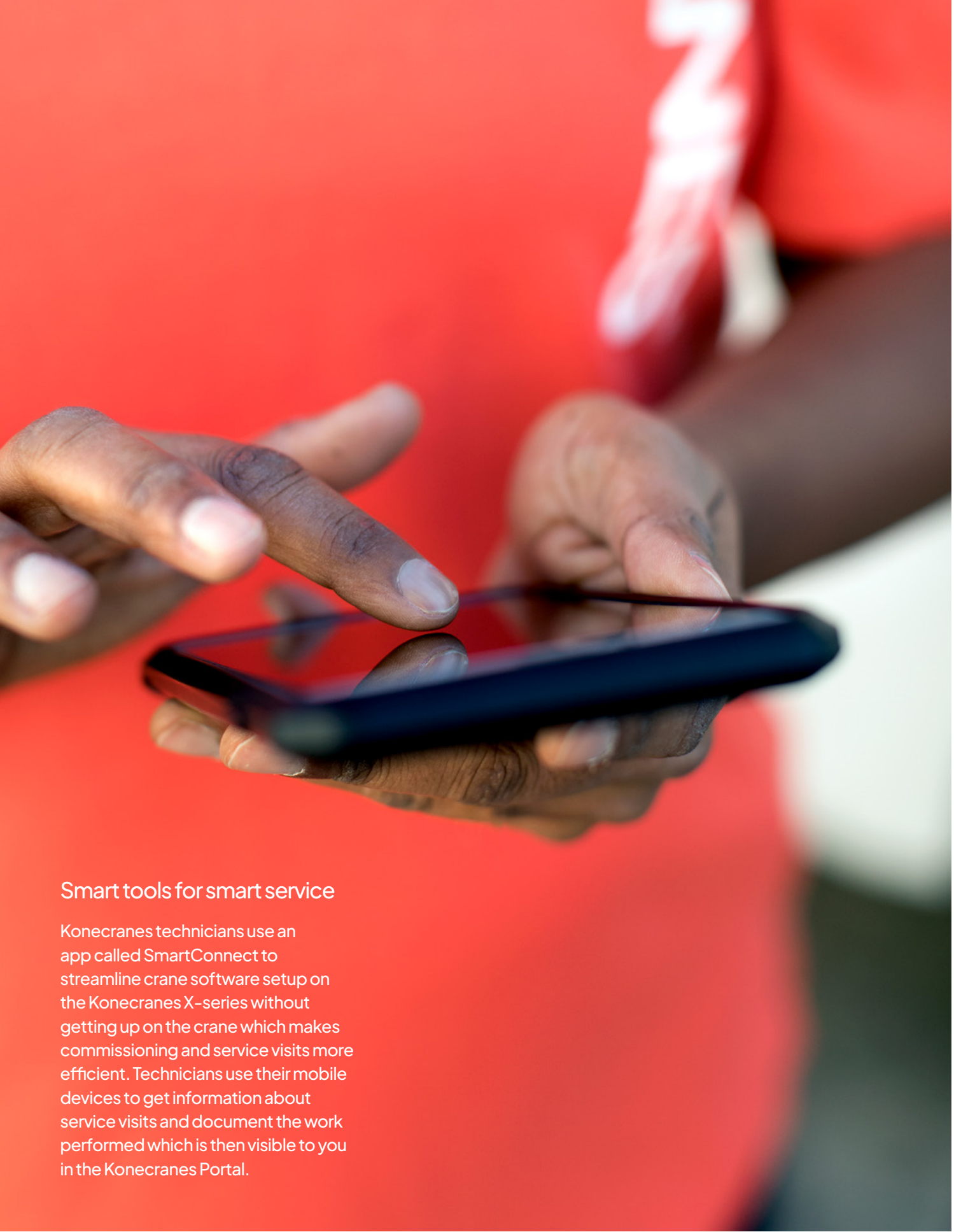
We take a comprehensive, systematic and collaborative approach to managing your assets throughout their lifecycle. We take time to meet with you one-on-one to share our findings, provide recommendations based on our industry-leading expertise and discuss how each action impacts your operations and the entire health of your business.



Learn more about Konecranes Service:
konecranes.com/service

Smart tools for smart service

Konecranes technicians use an app called SmartConnect to streamline crane software setup on the Konecranes X-series without getting up on the crane which makes commissioning and service visits more efficient. Technicians use their mobile devices to get information about service visits and document the work performed which is then visible to you in the Konecranes Portal.



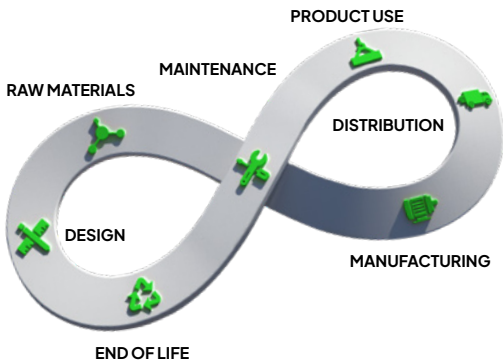
Sustainability at every stage of the crane's lifecycle

We are committed to providing sustainable solutions and services while preventing and minimizing emissions and waste.

Lifecycle thinking combined with usability, eco-efficiency and safety guide us in our product design. Our aim is to maximize the lifecycle value of our products.

The design of the Konecranes X-series crane incorporates a conscious selection of materials, intelligent assembly and carefully chosen components. The crane uses less steel due to new features such as the thrust rocker (no counterweights) and belt transmission. And the optimized reeving system with synthetic rope and guide rollers on all four corners provides smoother movement and less wear and tear to help prolong equipment lifetime.

Inverter lifting provides more precise control of motor speed and minimizes idle time for less energy waste. And remote monitoring and predictive maintenance mean service can be carried out based on actual condition and planned around production schedules, making it more targeted and resource efficient.



Learn more about sustainability at Konecranes:
konecranes.com/about/sustainability



KONECRANES®



Konecranes is a global leader in material handling solutions, serving a broad range of customers across multiple industries. We consistently set the industry benchmark, from everyday improvements to the breakthroughs at moments that matter most, because we know we can always find a safer, more productive and sustainable way. That's why, with around 16,600 professionals in over 50 countries, Konecranes is trusted every day to lift, handle and move what the world needs. In 2023, Group sales totaled EUR 4.0 billion. Konecranes shares are listed on Nasdaq Helsinki (symbol: KCR).

© 2024 Konecranes. All rights reserved. 'Konecranes,' 'Moves what matters' and  are either registered trademarks or trademarks of Konecranes.

This publication is for general informational purposes only. Konecranes reserves the right at any time, without notice, to alter or discontinue the products and/or specifications referenced herein. This publication creates no warranty on the part of Konecranes, express or implied, including but not limited to any implied warranty or merchantability or fitness for a particular purpose.

KONECRANES

Moves what matters.