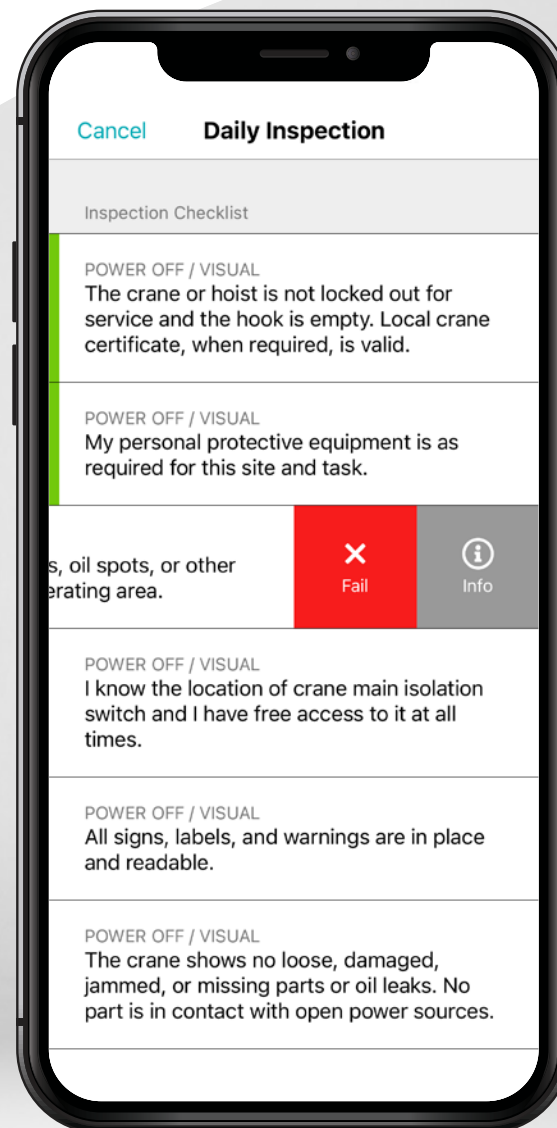


CheckApp for Daily Inspections



Go digital with your daily crane inspections

Konecranes CheckApp for Daily Inspections has been designed to help crane users quickly and easily record their findings when performing pre-shift and/or pre-lift inspections. It gives users a digitalized and cost-effective way for recording and retrieving daily inspection data that can be used for internal auditing and compliance.

What is a daily inspection?

A daily inspection is a crane operator's own assessment of the condition of an asset and environment for safe use. It is not an expert's examination of the condition of an asset or component. Daily inspections are a statutory requirement in several countries and good practice to follow for the safe use of lifting equipment.

Why perform daily inspections?

The most important reason is safety. Even with regular inspections and maintenance, issues can arise for a variety of reasons including

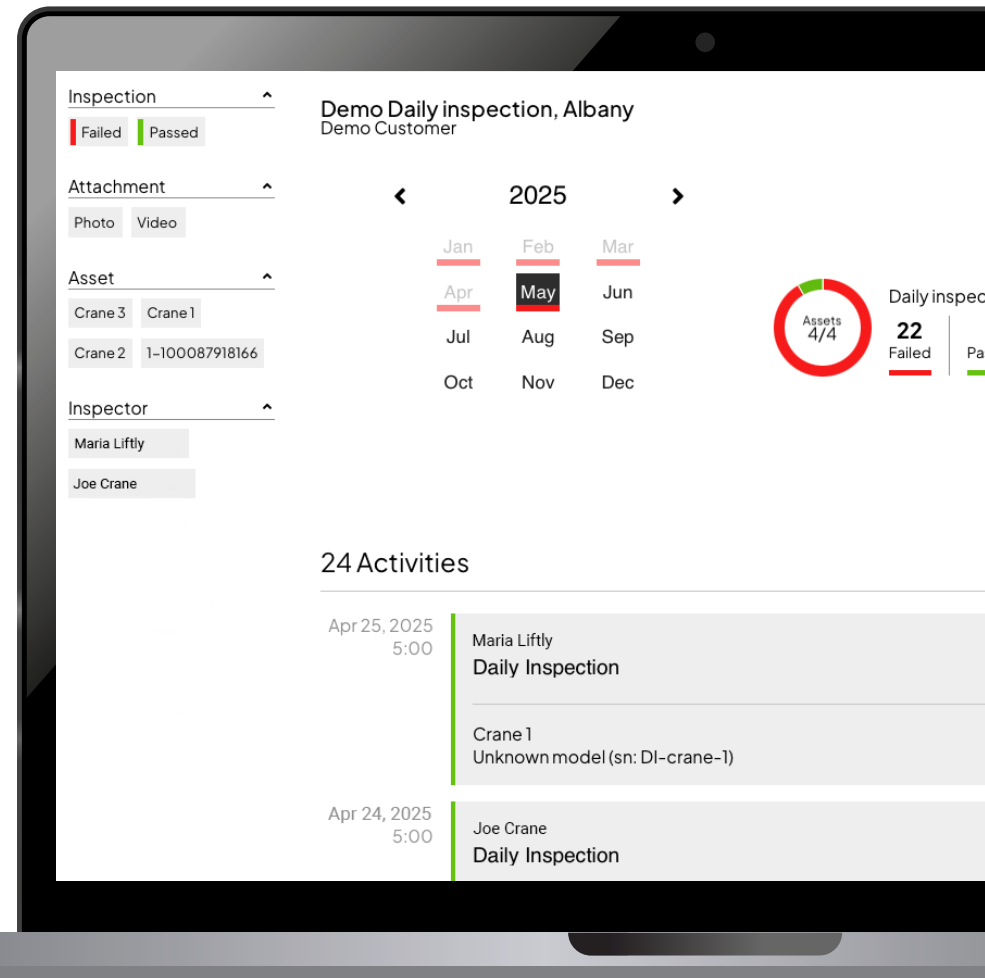
continuous or heavy use, operator behavior, overloads and more. A daily inspection helps you spot obvious damage, excessive wear or other deficiencies and lets you know that the crane is working correctly before a load is lifted.

Why use CheckApp?

Having an easy to use app can motivate users to perform the daily inspection. CheckApp has 15 checkpoints that can be marked as pass or fail with a simple swipe. A record of all daily inspections performed is available on the Konecranes Portal.

What can I do with the inspection data?

Besides providing an audit trail of daily inspections, the information can help you recognize potential asset-specific safety or production risks and identify workplace improvement opportunities. It can also help you identify the need for operator training as well as deviations in following local safety and other site rules.



Data security

Konecranes digital services have ISO/IEC 27001:2022 certification for information security management. The ISO/IEC 27001 certificate demonstrates a commitment to proactively manage the information security of Konecranes digital services and ensure compliance with legal and customer requirements. The certification applies to the development and delivery of the Konecranes Portal (portal.konecranes.com), the CheckApp for Daily Inspections and Slings and Accessories Inspection apps, and the TRUCONNECT suite of remote service products.

Getting started

Once you have CheckApp added to your agreement you'll need to take a few steps to get started. This checklist contains items that need to be addressed to begin using CheckApp in your facility.

ACTION ITEM	RESPONSIBLE	STATUS
Verify IT approval for CheckApp usage if needed. *		
Verify network coverage – are you able to get a wifi or network signal where your cranes are located?		
Decide which cranes you will use CheckApp with. We recommend assigning CheckApp to every asset in your crane fleet. If you have cranes that are not in the Konecranes Portal let your salesperson know so they can be added. You can use CheckApp with cranes that are not covered in your Service agreement, but they need to be assigned in the portal so they show up in the app.		
Do operators have email addresses? If not, set up individual or shared emails.		
Purchase devices – will you have one device per user or shared devices?		
Name operator users and create accounts on the Konecranes Portal.		
Name the person looking after the inspection results and make sure they have an account on the Konecranes Portal.		
Add customized checklist on the Konecranes Portal if needed.		
Arrange training for operator users and anyone who will be accessing the information on the Konecranes Portal.		



*The ISO 27001 certificate for information security can be downloaded from konecranes.com

The Konecranes Portal

The Konecranes Portal gives you quick and easy access to your daily inspection records, crane service information, plus asset condition and usage data from TRUCONNECT. The combined information on the portal gives you a comprehensive view of the condition of an asset in one easily accessible place, helping streamline maintenance management.

01 OPEN ITEMS

Summary of open safety risks and production risks identified during service visits.

02 CALENDAR

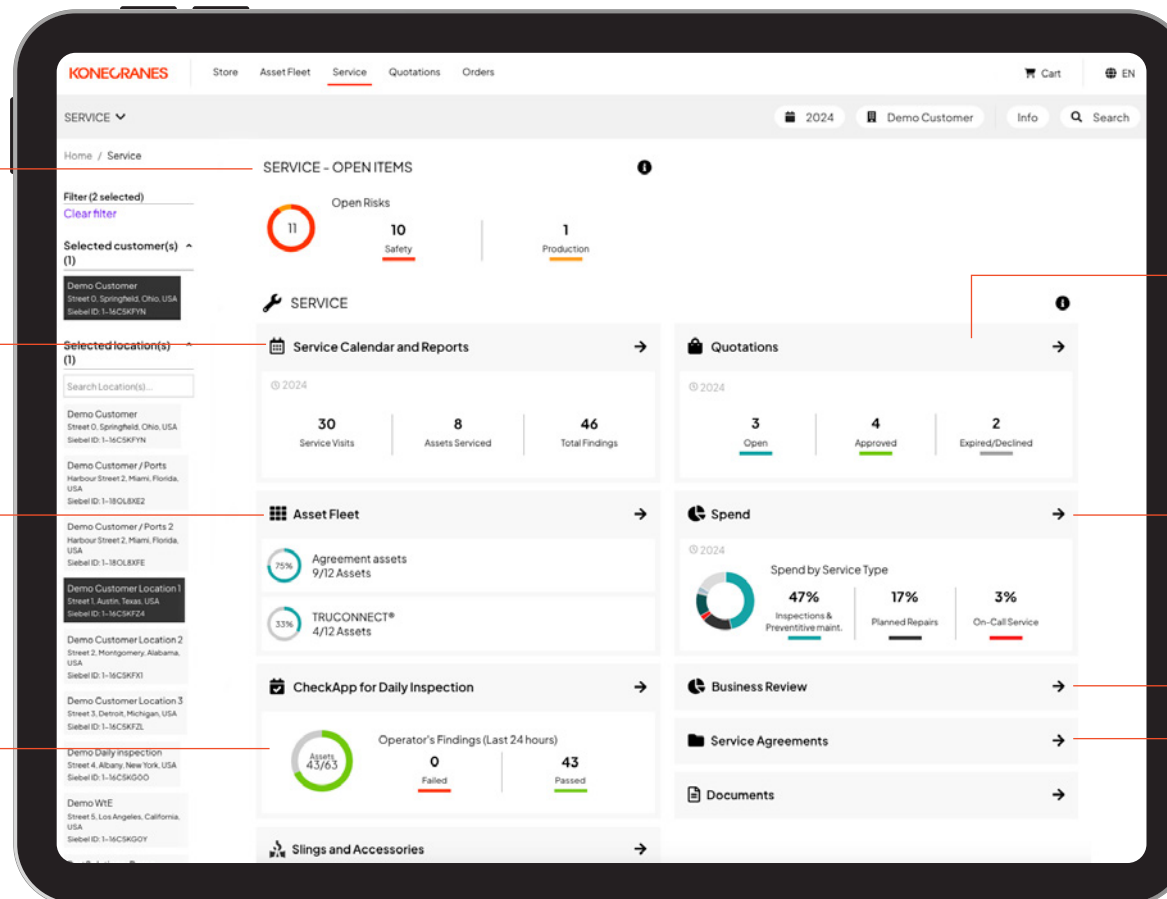
Overview of service visits and link to inspection and service reports and information about upcoming service visits.

03 FLEET

Quick view of the number of assets under agreement and with TRUCONNECT. The fleet page gives you a clear view of safety and production-critical issues for each of your assets.

04 CHECKAPP

Overview of checkpoints that CheckApp users have passed or failed in the past 24 hours.



05 QUOTES

Summary of open, approved and expired or declined quotations. Drill in to see details and to approve quotes.

06 SPEND

Overview of service spend during the selected time frame.

07 BUSINESS REVIEW

High-level review of your service program including service trends, asset findings, TRUCONNECT usage and alerts, and detailed spend.

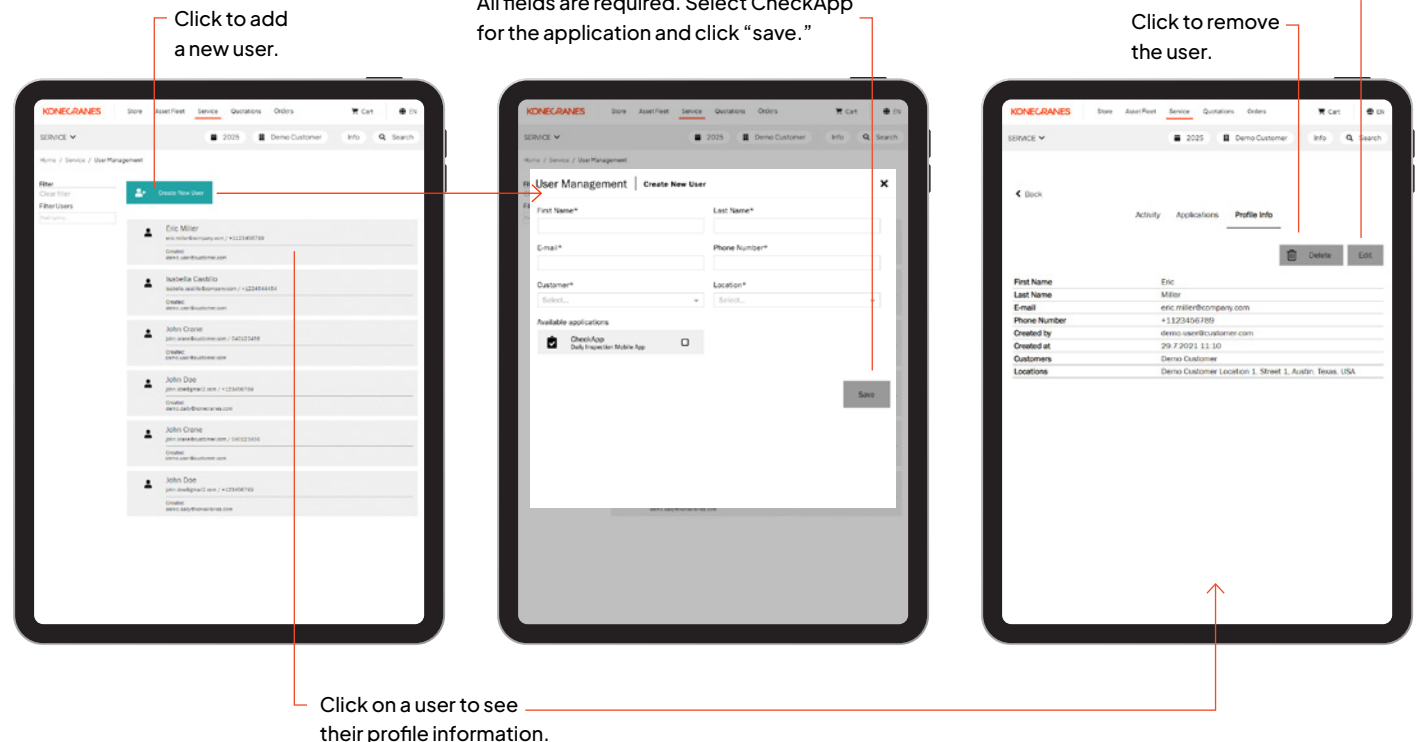
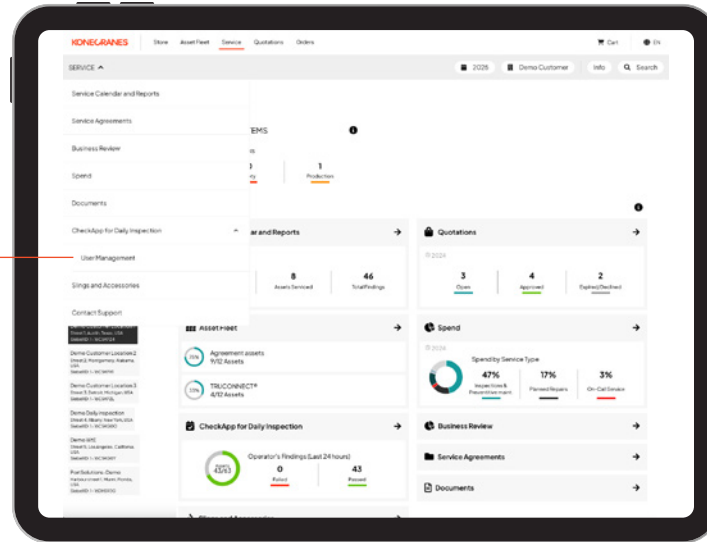
08 AGREEMENTS

Detailed service agreement information including assets, services and service frequency.

How to give access to users

- You can give or remove CheckApp access for operators in the Konecranes Portal.
- CheckApp users will need to have an email account to sign in to the app.
- If you are adding users for the first time and you have a large number of people to add, you may want to make a list of users and their information.
- CheckApp users are able log in to the Konecranes Portal but they can only see daily inspection reports.
- Managers that don't have a Konecranes Portal account can request access on the portal log in page.

The user management tool can be found in the menu under the Service tab on the Konecranes Portal.



How to add a customized checklist

You can create your own customized checklist in the Konecranes Portal that is specific to an asset or location. You can take the 15 checkpoints in CheckApp and add a few more that are specific to your site or create a new list entirely.

Click on a Daily Inspection checklist to see the list with instructions.

Give the checklist a descriptive name and choose an inspection option.

Any custom checklists you create will show here.

Click "add new" to create a custom checklist.

Check which assets the checklist will apply to.

Add a custom checkpoint here, click "add new" to another checkpoint.

When done click "save and publish."

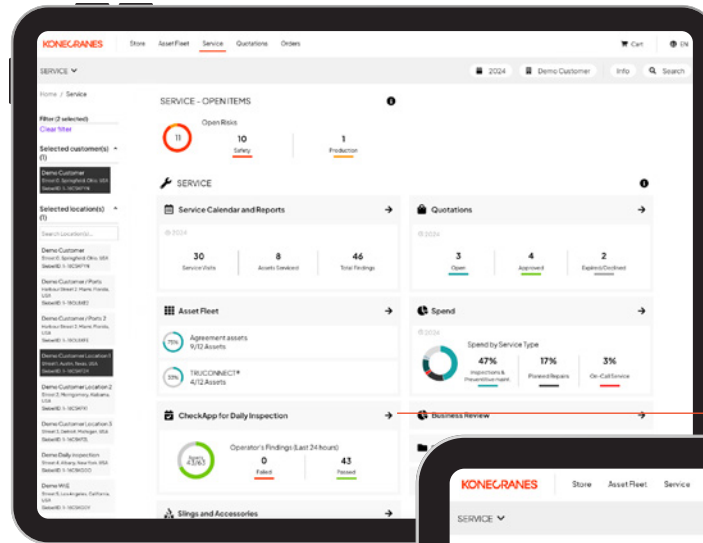
How and when to look at CheckApp information

The Service section on the Konecranes Portal gives you a quick overview of how many checkpoints have passed or failed over the past 24 hours.

It's good practice to check this page daily, especially when you first implement CheckApp, so you can make sure the daily inspections are being done. You can also check the inspection summary to view completed inspections along with operator names and times.

For maintenance needs, checking for issues daily or weekly in the beginning can help you spot issues quickly. As operators become accustomed to communicating problems - a weekly or monthly check may suffice.

For compliance needs you can check the information on a monthly or quarterly basis to make sure you have the assets you need covered and that inspections are being done on time.



Your service dashboard shows items that have passed/failed in the past 24 hours. Click the arrow to see inspection details.

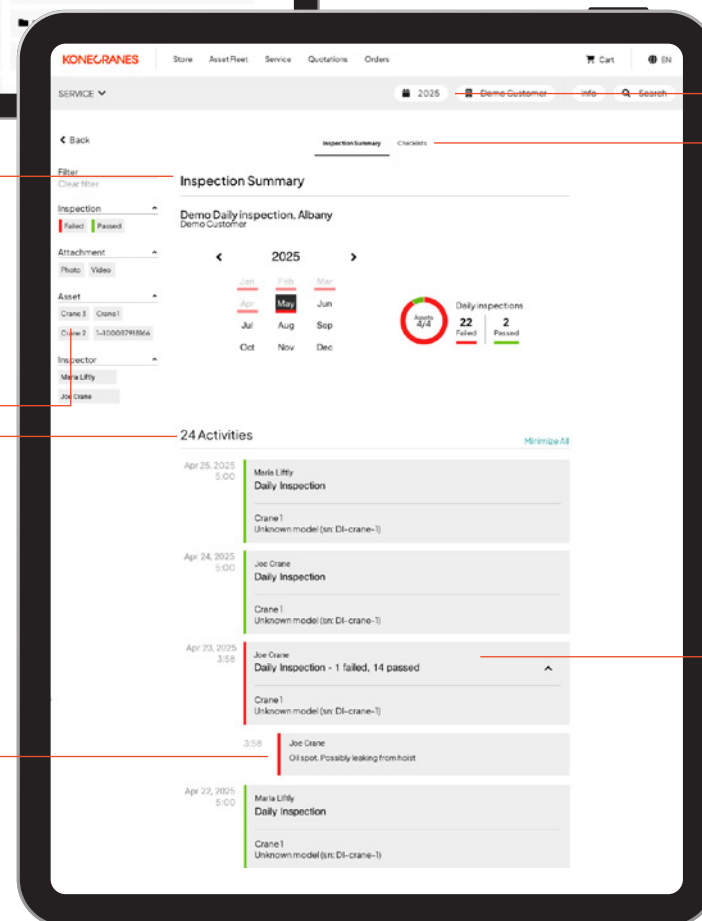
Choose a year, quarter or month view.

The summary shows the number of completed daily inspections in a selected time frame as well as the number of those with an observed deficiency. Repeated observation on the same asset counts as multiple deficiencies.

Filter by asset and failed inspections to see which assets need attention.

Activities shows each completed daily inspection in chronological order starting with the newest. Color indicates pass/fail.

If a checkpoint failed, the operator's comments and photo (if available) will show.



Under the Checklist tab you can create your own customized checklist that is specific to an asset or location.

Click an inspection to see the details.

What the CheckApp data can tell you

Knowing who performed the daily inspection and on which asset can be helpful for safety and quality checks and assessing individual operator behavior and training needs.

Regular communication between operators and maintenance can help issues get taken care of more quickly and is safer for everyone. If managers notice that operators are recording failed checkpoints but maintenance doesn't know about it, they can address the communication issue.

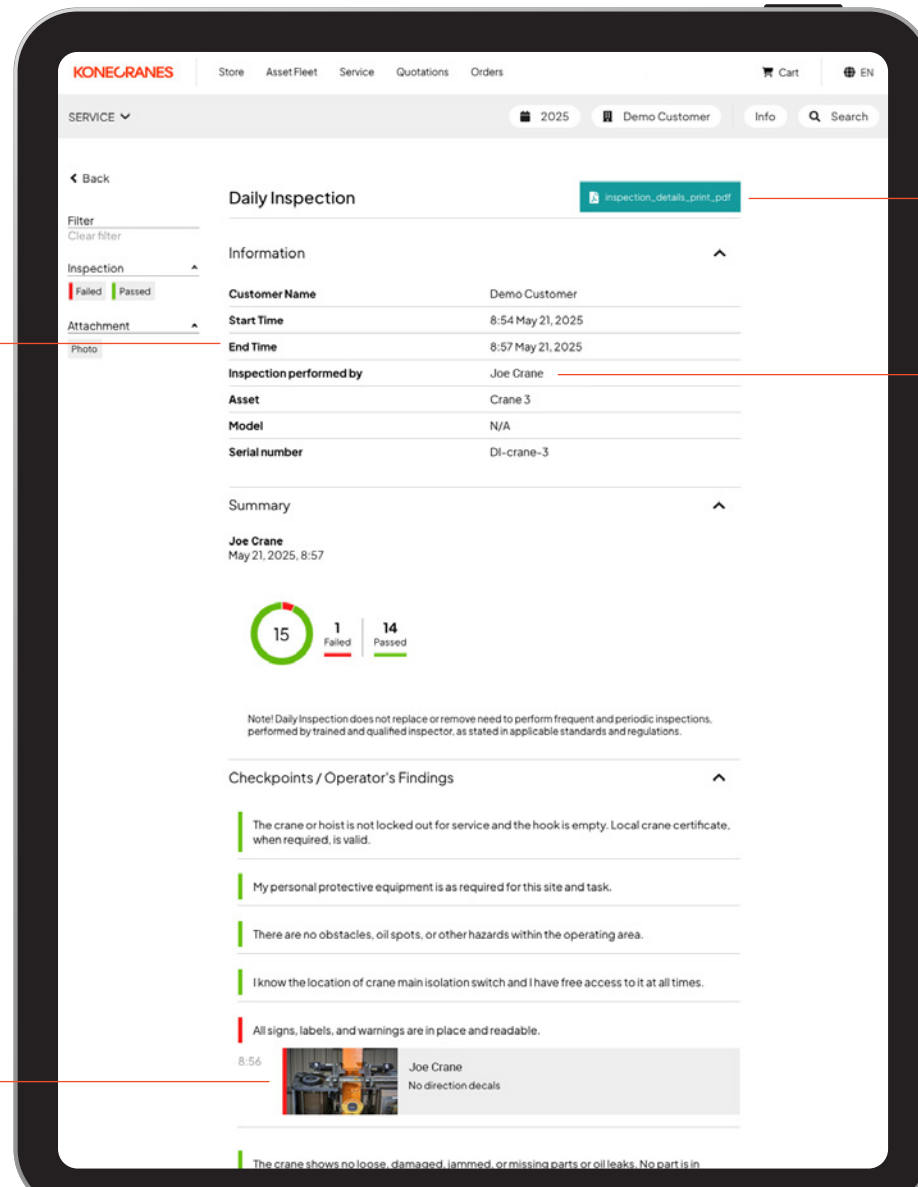
In addition to risks to safety and production, that data can indicate workplace improvement opportunities. If obstacles and hazards are frequently spotted, there may be a need to clean up a workspace or rearrange equipment around the crane.

Audit trail for compliance

Daily inspections are a requirement in many countries. You'll need a record of these inspections for facility audits or in the case of an incident. The Daily Inspection summary can be filtered by month, quarter or year. You can then filter by asset to see a complete list of inspections for one asset.

You can see how long it took for the inspection under Information. This can give you an idea of training needs if the time is excessively long.

Clicking on a failed checkpoint will show you a larger version of the photo.



Download a pdf of the inspection results.

Information includes the operator's name and start and end time of the inspection.

What happens to my CheckApp data if I discontinue my Service agreement?

If you cancel your agreement, you retain access to the Konecranes Portal (subject to change, conditions apply).

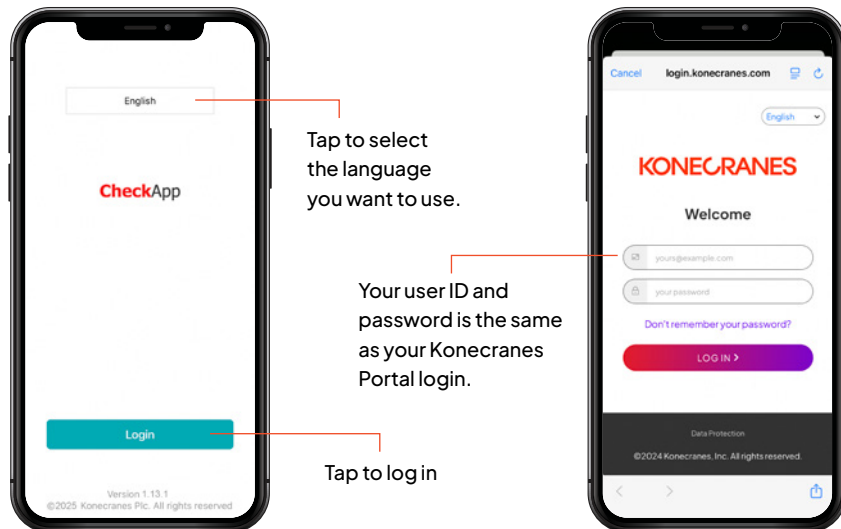
How to download and use the app

① Download the app

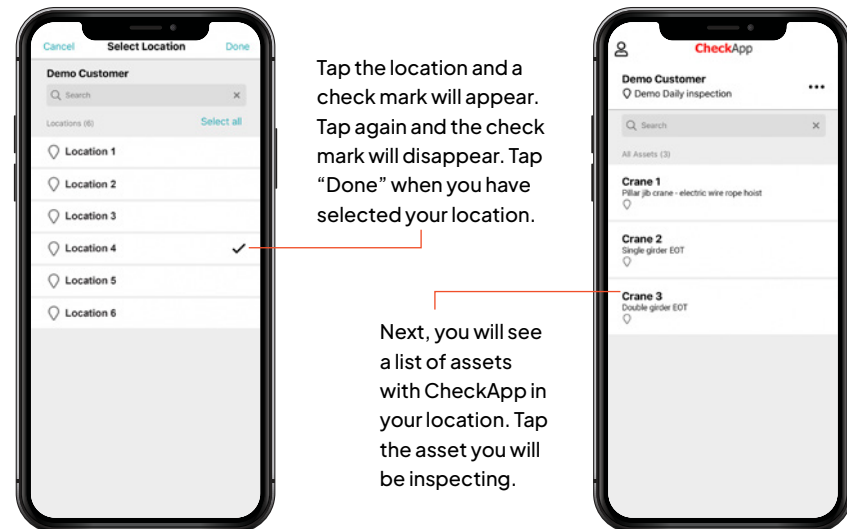
Search for “Konecranes CheckApp” on the Apple App Store for Apple devices or Google Play for Android devices. The app is free, but you will need an Apple ID or Google account to download.



② Login to the app

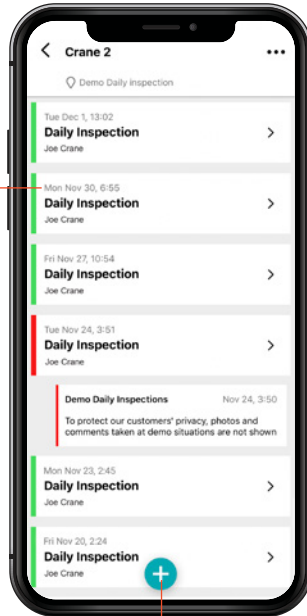


③ Select location and asset

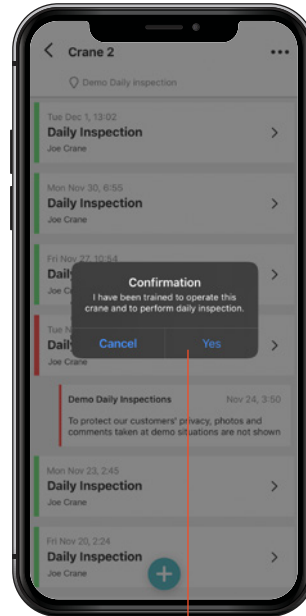


④ Begin your daily inspection

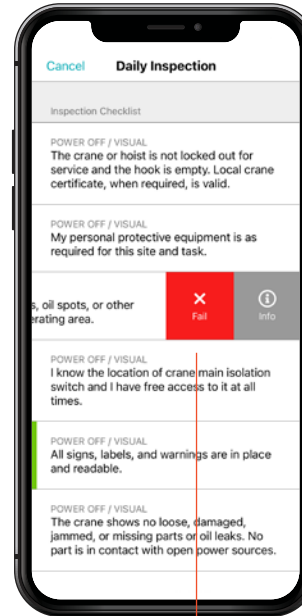
The asset you choose will show a list of previous inspections by date and time.



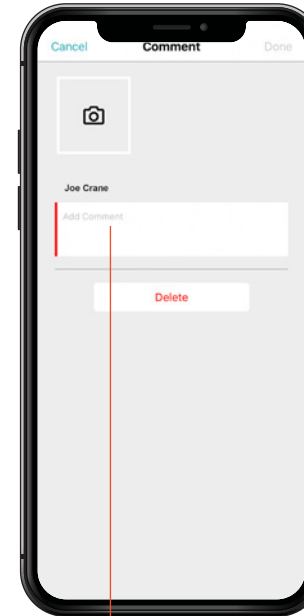
Tap the green “plus” button to begin a new inspection.



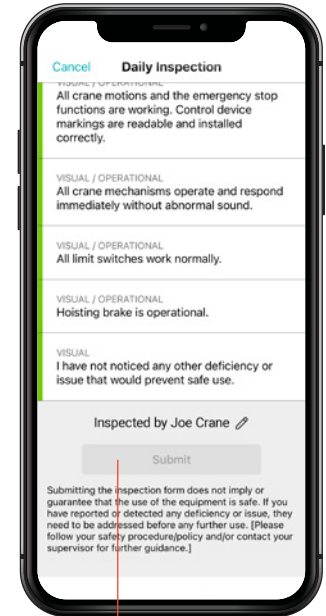
Confirm if you are trained to operate the crane and perform daily inspections.



For each step, either swipe to the right for “pass” or to the left for “fail.” The info button provides instructions for the checkpoint.



If you “fail” a checkpoint, you can add a photo and comment.



When you have finished the inspection - tap “submit.” The inspection will now be in your list in the app and on the Konecranes Portal.

How to perform a daily inspection

The following are the checkpoints and instructions included in CheckApp. You can also watch a video of a daily inspection being performed at konecranes.com/resources/how-to-perform-daily-or-pre-shift-inspection.



①



**The crane or hoist is not locked out for service and the hook is empty.
Local crane certificate, when required, is valid.**

- Check that there are no locks or tags indicating that the crane or hoist is under service or out of order.
- Never violate the lockouts or tagouts of other people.
- The hook must be free of load and of a lifting accessory.
- Do not lift unknown loads.

②



My personal protective equipment is as required for this site and task.

- Follow the local site policies, rules and instructions for personal safety and local managements other guidance.
- Typical requirements are hard hat, respirator, eye and/or hearing protection, safety shoes and safety gloves as well as the use of protective clothing with high-visibility, fire-resistant, tear-resistant, and/or anti-static material.
- Loose clothing or jewelry that can get caught on controls or pulled into moving parts as well as untied long hair are safety risks.

③



There are no obstacles, oil spots, or other hazards within the operating area.

- There must be enough room for the load to move and turn.
- Pay special attention when the load is of odd shape.
- The operating area must be free of other people, other cranes, moving equipment such as lift trucks, permanent equipment such as machine tools.
- Pay special attention to robots since their operating area may be much wider than appears.
- The floor/ground must be free of dangerous holes, bumps, or slipper spots. If any, they must be marked and guarded off with railings, etc.
- Lighting conditions must be adequate for safe work.

How to perform a daily inspection

4



I know the location of crane main isolation switch and I have free access to it at all times.

- The main switch is typically mounted on a nearby wall or in an electrical equipment room.
 - There must not be any obstacles on the way or areas/doors that require permission for access you may not have.
 - Other switches may be nearby; identify the switch that controls the crane.
 - There is usually a label that states the crane number.
-

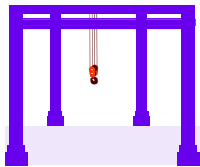
5



All signs, labels, and warnings are in place and readable.

- All safety labels must be easily readable from the ground level or from any other operating location.
 - Direction and capacity labels must be in place and easily visible.
 - Loads must not exceed the rated capacity.
 - Other warnings (e.g., blocking off the operating area) as defined by local site rules must be in place.
-

6

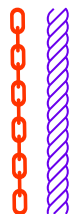


**The crane shows no loose, damaged, jammed or missing parts or oil leaks.
No part is in contact with open power sources.**

- There must be no signs of oil leak on the crane or on the floor area beneath it.
- There must be no tools or other loose items lying on the beams, rails or trolley.
- All safety guards must be properly in place and undamaged.
- All festoon and pendant cables must move freely.

How to perform a daily inspection

7



The ropes or chains show no sign of deformation, damage, or excessive wear.

ROPES

- Ropes must be properly seated in the grooves of the rope drum and sheaves.
- The ropes must not be twisted, entangled or be with visibly broken wires and/or strands.
- The ropes must be free of any slack or tightened loops, protrusion, waviness, bending, basket deformations, flattening or bulging.
- The rope must be oiled and must not have extensive corrosion or discoloration.

CHAINS

- The chains must be free of cracks, severe nicks and gouges, interlink wear, distortion, deposits, extensive corrosion and discoloration.

8



The lifting accessories assigned for the job show no excessive wear or damage, and they have been inspected and are designed for the work.

- The inspection stickers, plates or RFID tags must be in place and must show the inspection is not overdue.
- The rigging chains must be free of cracks or corrosion.
- The lifting slings must be free of any punctures, cuts, stretching or fraying.
- Remove damaged or overloaded lifting accessories from use immediately and mark them as discarded.

9

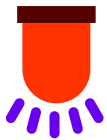


The hook shows no deformations, swivels smoothly and the safety latch is in place and working.

- The hook must be free of visually identifiable twist, cracks, nicks, gouges, corrosion, traces of welding, deformation of the throat opening, and wear on the saddle or load bearing point.
- Rotate the hook horizontally. When the hook swivels, no abnormal sounds must be heard.
- The hook must hang perpendicularly. If the hook hangs more than 2° from vertical line, a more comprehensive inspection is needed.
- The safety latch must be in place. Test by hand that it works properly.

How to perform a daily inspection

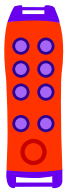
10



All warning devices are working and respond immediately.

- The warning and indicating devices typically included indicator lights, LEDs, displays, alarm horns, gongs, bells, alarm sirens and beacon lights.
 - They must not show any visual damages.
 - Test each of them for correct operation.
-

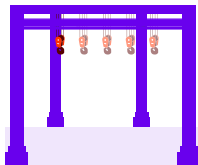
11



**All crane motions and the emergency stop functions are working.
Control device markings are readable and installed correctly.**

- The control device enclosure, button rubbers and cables must show no damages.
 - Control device's markings must be intact and readable in all operating situations.
 - The radio controller must not indicate an alert or error code.
 - The controller's battery must be properly fastened and charged to a level that will last your entire shift.
 - Starting at slow speed, test all crane motions and ensure that they correspond to control device markings.
 - Test that each button, joysticks and isolator on the controller operates smoothly.
 - You should be able to feel the positions where they engage higher speeds.
 - Engage the emergency stop button and make sure that the crane does not move when using the direction controls.
-

12



All crane mechanisms operate and respond immediately without abnormal sound.

- Test the trolley and bridge brakes for correct response.
- There must not be any excessive drift or extended stopping distances.

How to perform a daily inspection

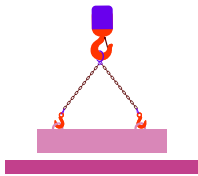
13



All limit switches work normally.

- Lift the empty hook slowly to the upper limit. The hoist must stop before the ultimate mechanical limit.
- Lower the empty hook slowly. The hoist must stop before the ropes start to slacken.
- Drive the hoisting trolley slowly towards each end of the bridge. The hoisting trolley must stop before the end of the bridge.
- Drive the crane slowly towards each end of the runway. The crane must stop before the end of the runway.

14



Hoisting brake is operational.

- Test the hoisting brakes for correct response.
- If available, lift any light test load 10 cm (4 in) from the ground.
- The load must stay at that height for at least 1 minute.

15



I have not noticed any other deficiency or issue that would prevent safe use.

- Note any other obstacles that prevent the safe operation of the crane.

Tips for implementing and using CheckApp

Include your safety team

Involving the members of your safety team can make a big difference in the successful implementation of regular daily inspections using CheckApp. The safety team can also emphasize the importance of daily inspections during periodic health and safety meetings.

Include your IT team

Mobile devices can be a productivity enhancer but of course you don't want your operators being distracted by messages or non-work apps. You can purchase mobile phones and use them with wifi-only capability and use device management to restrict access to non-work apps or functionalities.

Consider device size

CheckApp works on different kinds of devices, but tablets are too large to hold in one hand and a desktop or laptop needs to be on a table making for a lot of back and forth to enter checkpoints—so a mobile phone may be the best choice.

Sharing and storage

Instead of purchasing a mobile device for each operator, you can use shared devices. You'll also want to think about where the mobile devices should be stored when not in use and if they should be checked out and back in after a shift or workday.

Introduce mobile apps together

If you are introducing more than one mobile app, consider deploying them together to help re-enforce use and understanding, and to save time on training.

Nominate and train key user(s)

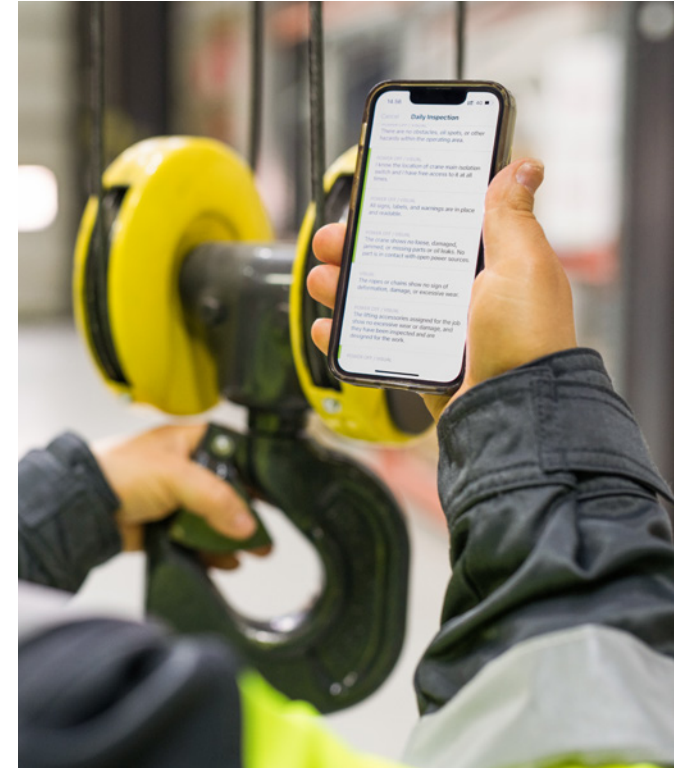
It's useful to have at least one key user for performing the daily inspection and another key user for the Konecranes Portal. Key users can be the go-to person for questions from other employees and can help train new employees.

Encourage use by operators

Give clear expectations to operators on when and how to perform the daily inspections. Some regulations require inspections pre-shift and some daily. Go through the checklist items with the operators and tell them what it means in practice in your facility. You can show them our daily inspection "how to" video or do a demonstration. Make the daily inspection and CheckApp part of operator training.

What to do for a failed checkpoint

If an operator fails a checkpoint, they'll need to know what actions should be taken. Are there issues that should be escalated to maintenance? Is someone checking daily inspection logs every day?



Check the data on a regular basis

Looking at the daily inspection data on the Konecranes Portal keeps you up-to-date on potential asset-specific safety or production risk issues. It can also help you identify workplace improvement opportunities and needs for operator training as well as deviations in following local safety and other site rules.



VISUAL/OPERATIONAL
Hoisting brake is operational.

VISUAL/OPERATIONAL
All crane mechanisms operate and respond immediately without abnormal sound.

VISUAL/OPERATIONAL
All crane motions and the emergency stop functions are working. Control device markings are readable and installed correctly.

VISUAL/OPERATIONAL
All limit switches work normally.

Konecranes is a global leader in material handling solutions, serving a broad range of customers across multiple industries. We consistently set the industry benchmark, from everyday improvements to the breakthroughs at moments that matter most, because we know we can always find a safer, more productive and sustainable way. That's why, with around 16,700 professionals in over 50 countries, Konecranes is trusted every day to lift, handle and move what the world needs. In 2024, Group sales totalled EUR 4.2 billion. Konecranes shares are listed on Nasdaq Helsinki (symbol: KCR).

© 2025 Konecranes. All rights reserved. 'Konecranes,' 'Moves what matters' and  are either registered trademarks or trademarks of Konecranes.

This publication is for general informational purposes only. Konecranes reserves the right at any time, without notice, to alter or discontinue the products and/or specifications referenced herein. This publication creates no warranty on the part of Konecranes, express or implied, including but not limited to any implied warranty or merchantability or fitness for a particular purpose.