

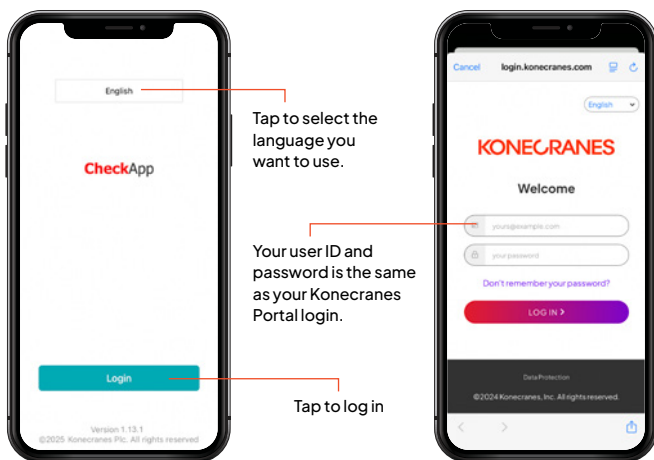
# Download and use the app

## ① Download the app

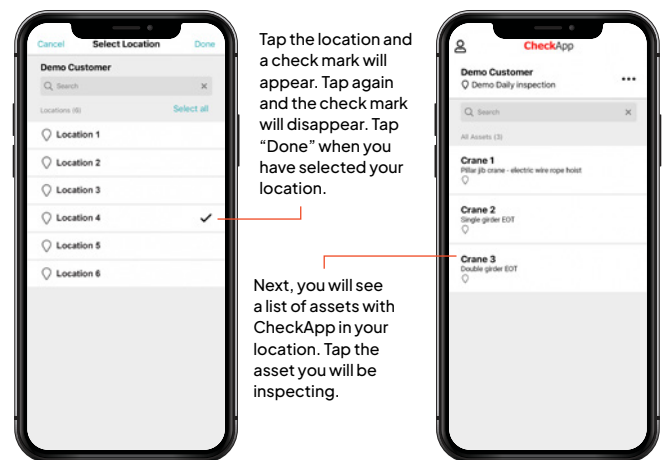
Search for "Konecranes CheckApp" on the Apple App Store for Apple devices or Google Play for Android devices. The app is free, but you will need an Apple ID or Google account to download.



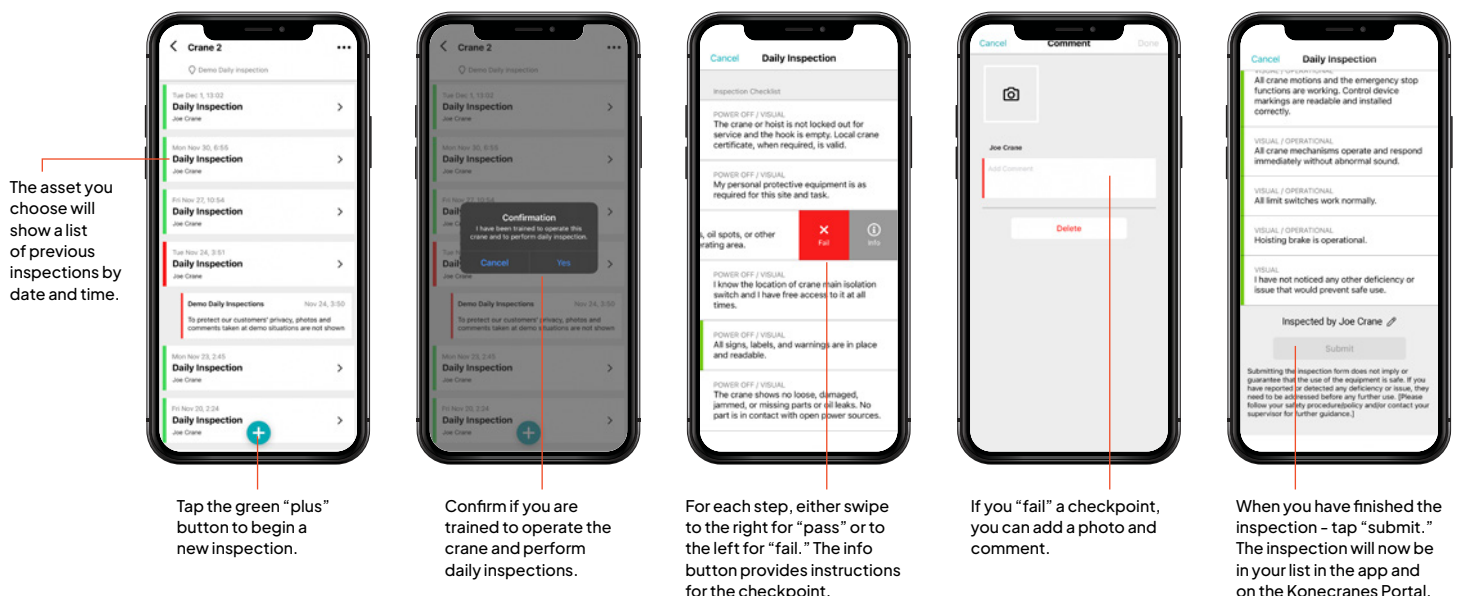
## ② Login to the app



## ③ Select location and asset



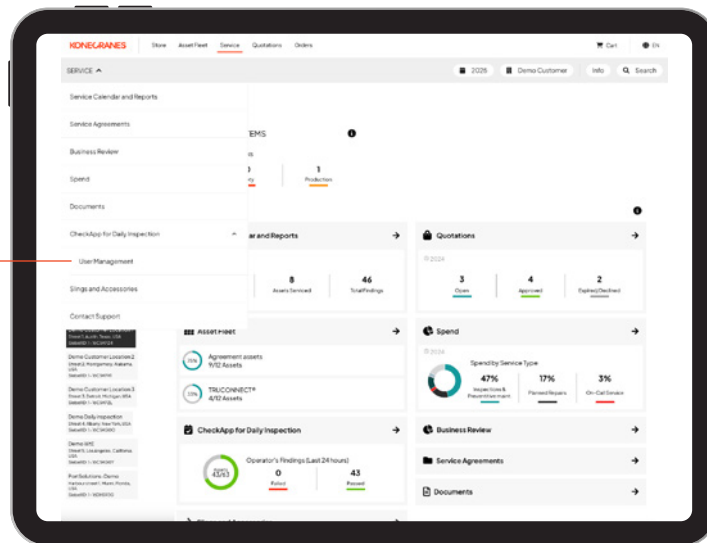
## ④ Begin your daily inspection



# Give access to users

Managers can give operators access to CheckApp through the user management tool on the Konecranes Portal. User access can also be edited or removed.

The user management tool can be found in the menu under the Service tab on the Konecranes Portal.

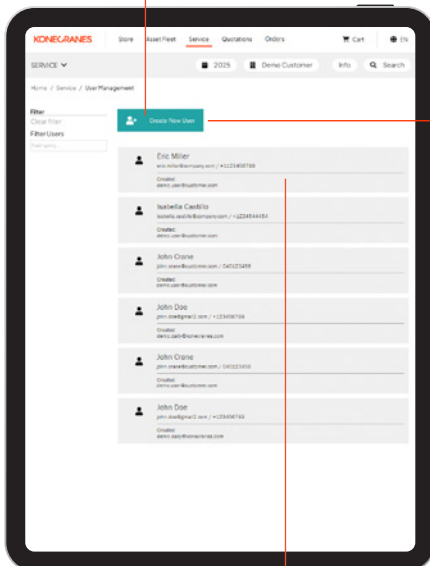


Click to add a new user.

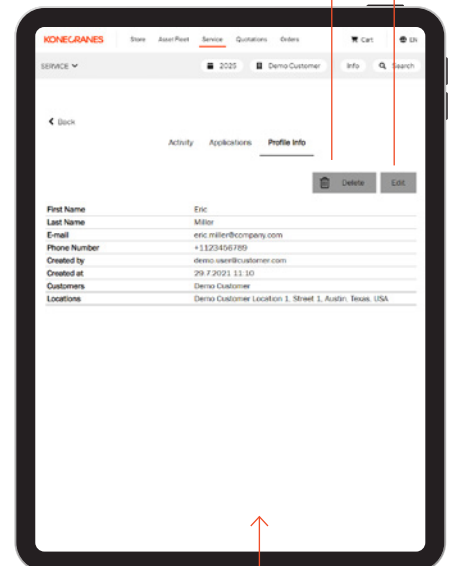
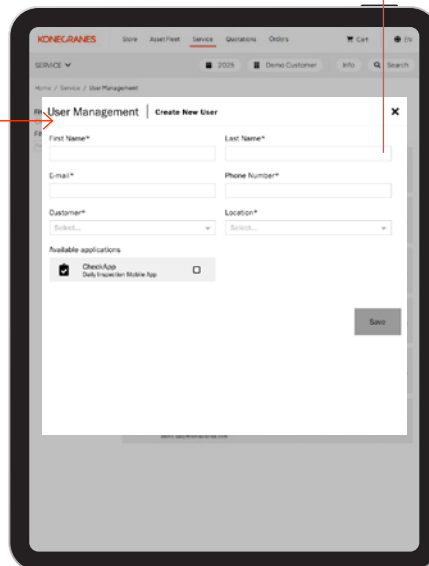
All fields are required. Select CheckApp for the application and click "save."

Click to remove the user.

Click to edit user information.

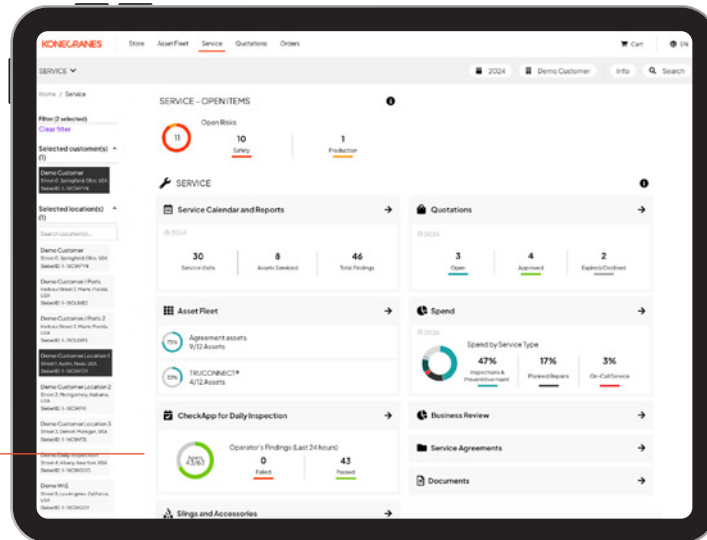


Click on a user to see their profile information.

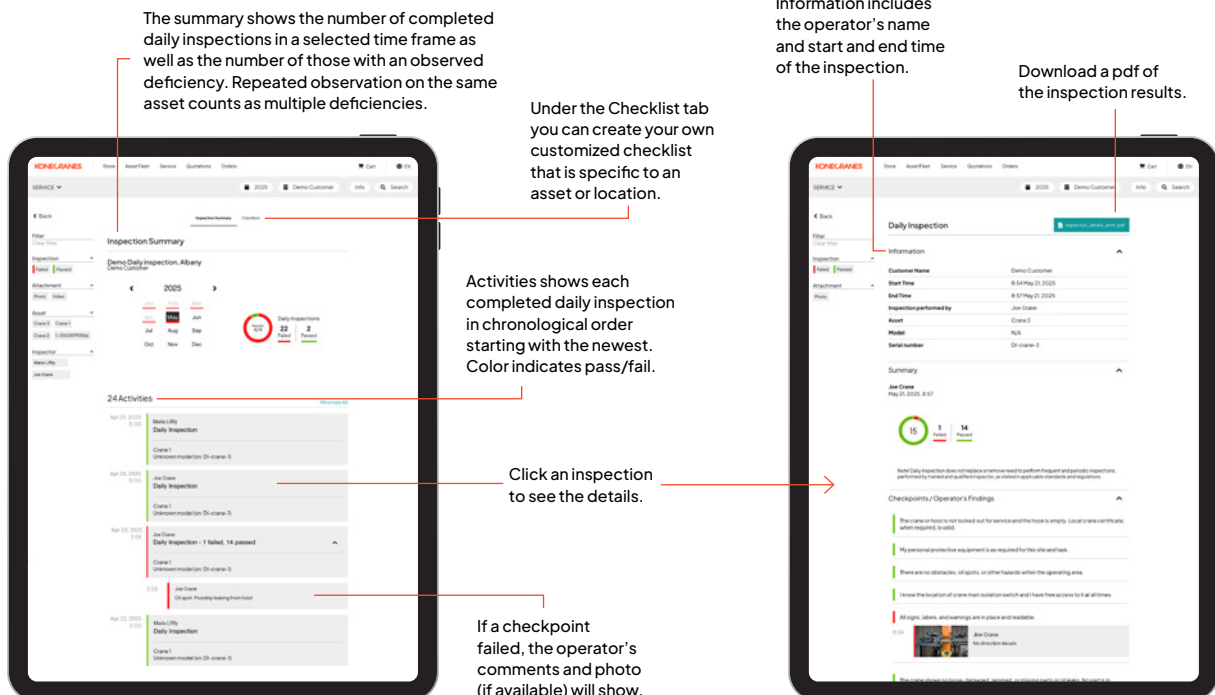


# View inspection results

Daily inspection records are accessible on the Konecranes Portal. The data can be used to help plan maintenance actions and provides an audit trail of completed daily inspections.



Your service dashboard shows items that have passed/failed in the past 24 hours. Click the arrow to see inspection details.



# Add custom inspection checklists

You can create your own customized checklist that is specific to an asset or location. You can take the 15 checkpoints in CheckApp and add a few more that are specific to your site or create a new list entirely.

Click on a Daily Inspection checklist to see the list with instructions.

Give the checklist a descriptive name and choose an inspection option.

Any custom checklists you create will show here.

Click "add new" to create a custom checklist.

Check which assets the checklist will apply to.

Add a custom checkpoint here, click "add new" to another checkpoint.

When done click "save and publish."