

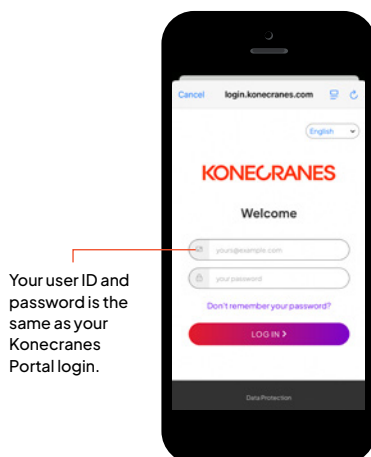
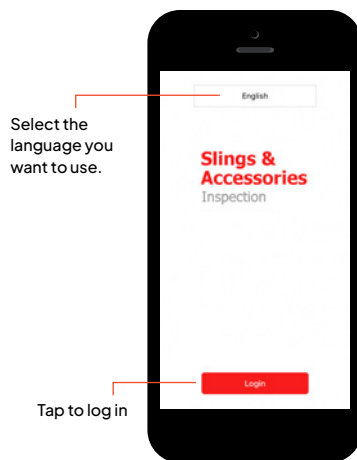
# Download and use the app

## 1 Download the app

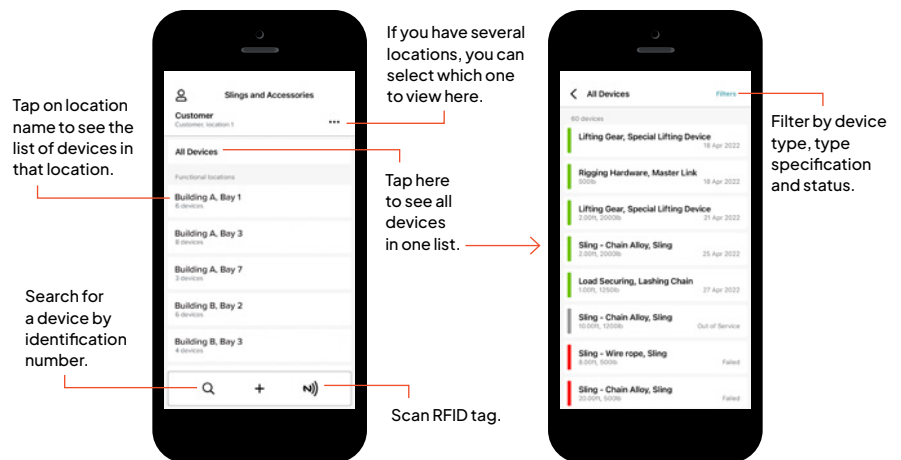
Search for "Konecranes Slings & Accessories" on the Apple App Store for Apple devices or Google Play for Android devices. The app is free, but you will need an Apple ID or Google account to download.



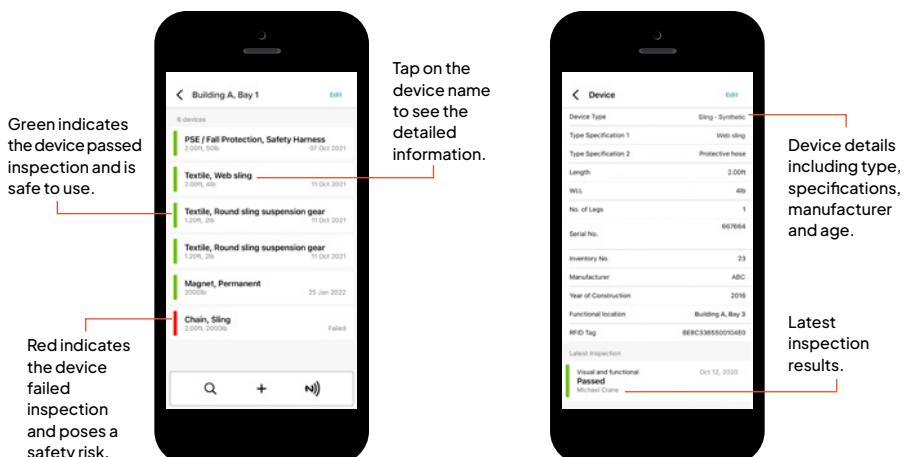
## 2 Login to the app



## 3 Find a device

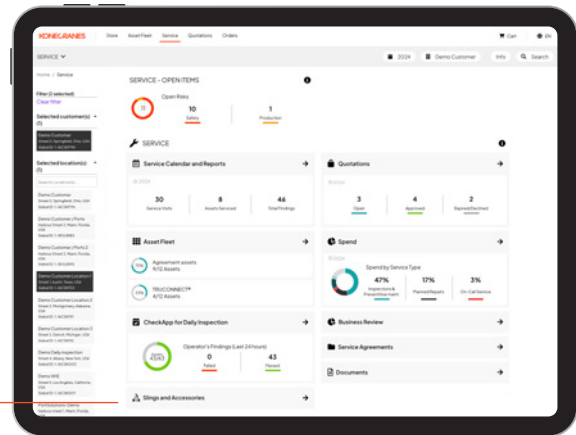


## 4 See device details



# Manage devices on the portal

The Konecranes Portal gives you quick access to all relevant attachment information and an archive of inspection data to help you centrally manage your lifting devices. It also provides a record for compliance with regulatory requirements.



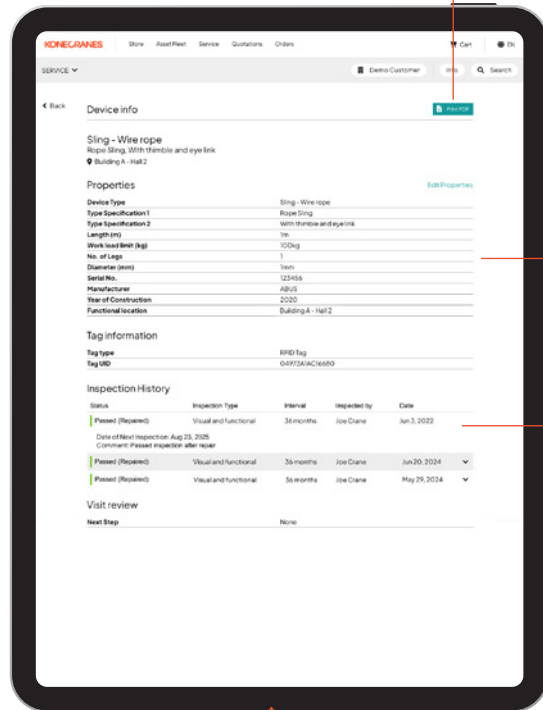
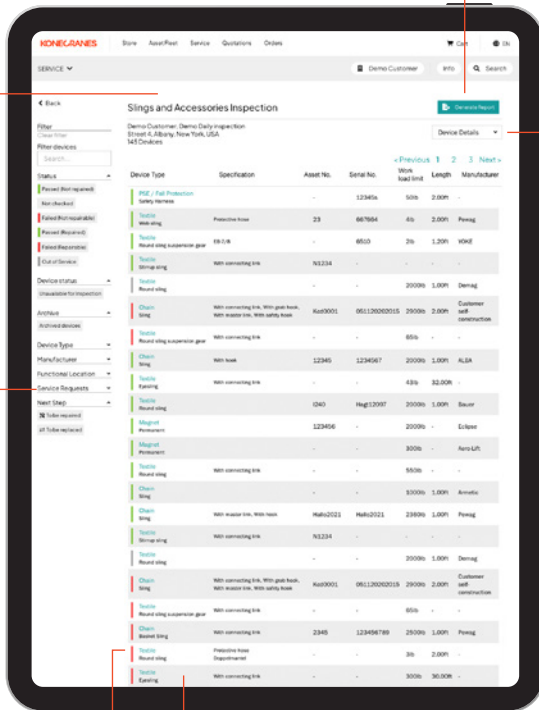
Generate a report that shows all devices or one based on the chosen filters — e.g., all failed devices from functional location XYZ. This report is only a summary and is not compliant with statutory requirements.

Switch between device details and inspection details.

From this device info view you can print or download a compliant individual inspection report.

This fleet view shows all recorded loose lifting devices for the selected location. By default, the list is sorted by next inspection date.

Filtering can help you easily manage devices like searching for all devices that failed inspection, or devices that need to be repaired or replaced.



Device details and tag information.

Inspection history shows all inspections that our inspectors have performed on this device.

## Inspection color indicators

- Not inspected yet
- Inspection past due  
Safety risk
- Inspection passed and not overdue  
Safe to use
- Taken out of service for an indefinite period
- Inspection failed  
Safety risk

Devices that are not inspected yet or are past due should be taken out of service without delay and should be inspected as soon as possible to avoid a safety risk.