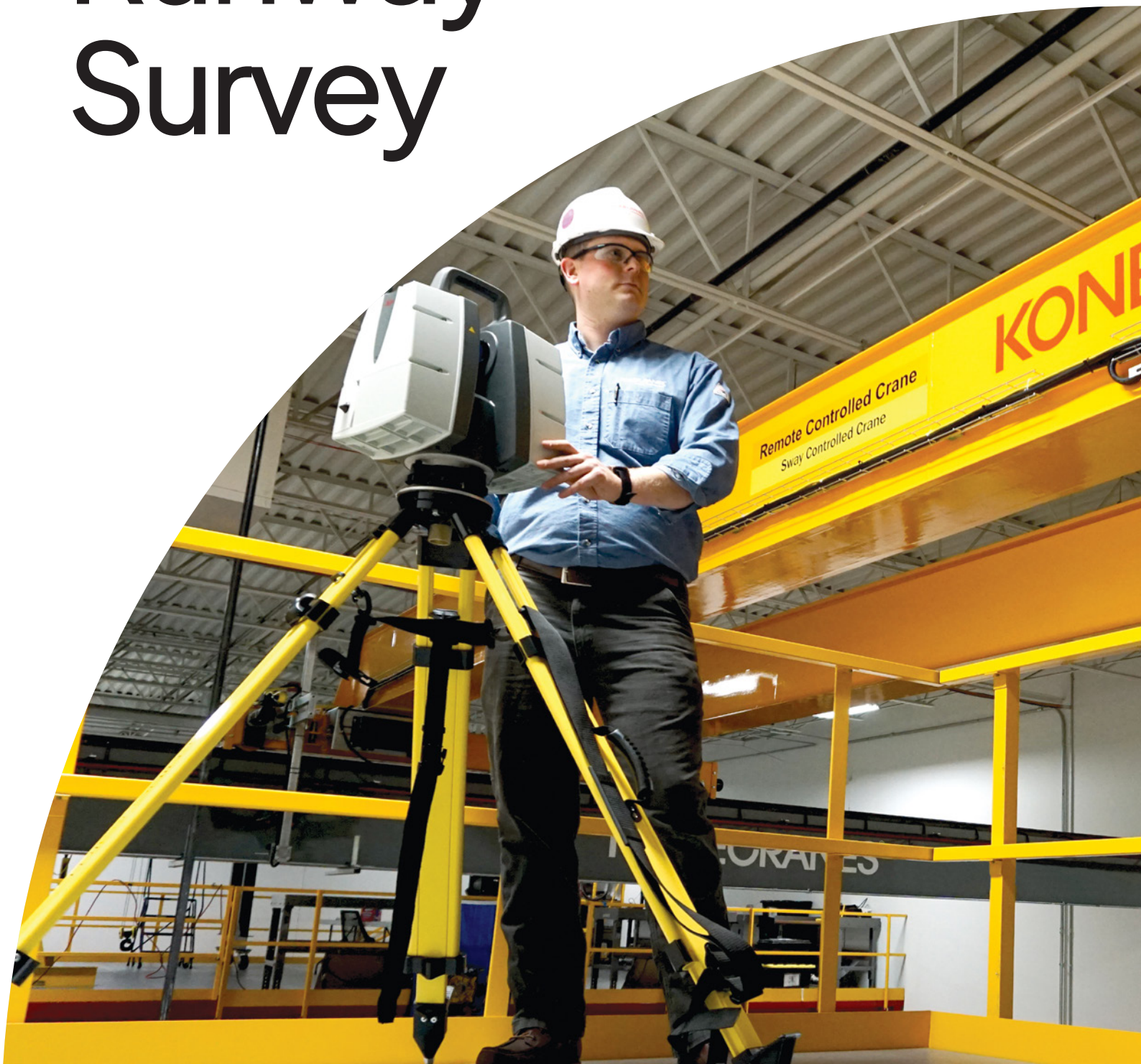


# RailQ Runway Survey





# Fast, safe, accurate crane rail survey

The condition of the runway influences how well a crane moves on its rails and affects the usability and lifetime of the crane and its travelling machineries. A runway in poor condition leads to reduced crane performance and reliability, and possibly to safety risks.

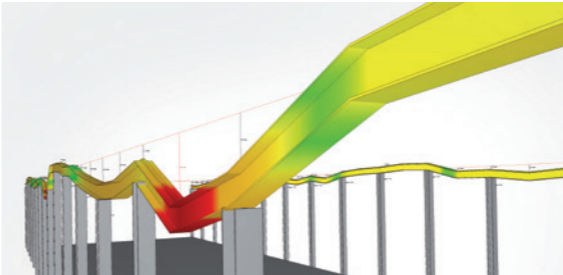
Konecranes RailQ Runway Survey is an industry-leading rail analysis that delivers accurate alignment information of your crane rail and expert recommendations on needed corrective actions.

RailQ takes you beyond guesswork with a proven, accurate and reliable system to help you find answers and make decisions.

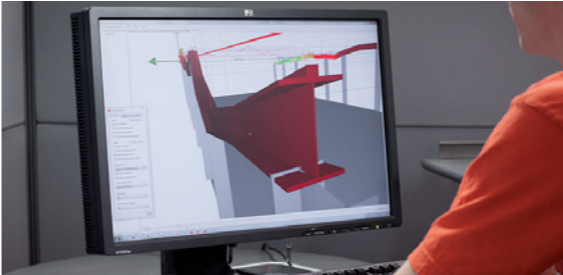
## → Benefits

- Requires less time than a traditional survey
- Provides accurate information on the condition and alignment of the runway through systematic application of technology by trained specialists
- Is safer to perform than a traditional runway survey, because it uses a remotely-operated robot

## RailQ delivers easily interpreted results



3D visualization of the condition of the rail.



Problem areas are easily communicated.



Recommendations with on-site consultation.

# Accurate measurements with less downtime

RailQ uses a remotely-operated robot combined with a visual inspection to provide you with information on runway span, straightness, elevation and rail-to-rail elevation.

The survey data is accurate and repeatable. Our proprietary analysis and visualization software produces reports that visualize the problem areas. Konecranes engineers review all collected data and provide recommendations for corrective actions.

**Get a complete view of crane and rail geometry**  
Konecranes RailQ Runway Survey and CraneQ Crane Geometric Survey work together for a complete view of crane and rail geometry.

The CraneQ Crane Geometric Survey provides accurate information detailing the alignment and the square of a crane. The scope of the survey includes wheels, guide rollers, end trucks, girders, and other components of the crane.

## RailQ reports available on Konecranes Portal

Your RailQ report and recommendations are made available on the Konecranes Portal. The customer portal gives you quick and easy access to your crane maintenance information, asset condition and usage data, and agreement details. You get a transparent view of all maintenance activities, TRUCONNECT alerts if applicable, and even spend over any selected time interval. Aggregated data can be viewed, analyzed and shared quickly, for a single asset or an entire fleet.

The portal provides the information you need to help make informed maintenance decisions. During a service visit, our mobile-enabled technicians can quickly and efficiently input information so you have quick access to your service data including findings and recommendations.





Konecranes is a global leader in material handling solutions, serving a broad range of customers across multiple industries. We consistently set the industry benchmark, from everyday improvements to the breakthroughs at moments that matter most, because we know we can always find a safer, more productive and sustainable way. That's why, with around 16,600 professionals in over 50 countries, Konecranes is trusted every day to lift, handle and move what the world needs. In 2024, Group sales totalled EUR 4.2 billion. Konecranes shares are listed on Nasdaq Helsinki (symbol: KCR).

© 2025 Konecranes. All rights reserved. 'Konecranes,' 'Moves what matters' and  are either registered trademarks or trademarks of Konecranes.

This publication is for general informational purposes only. Konecranes reserves the right at any time, without notice, to alter or discontinue the products and/or specifications referenced herein. This publication creates no warranty on the part of Konecranes, express or implied, including but not limited to any implied warranty or merchantability or fitness for a particular purpose.