

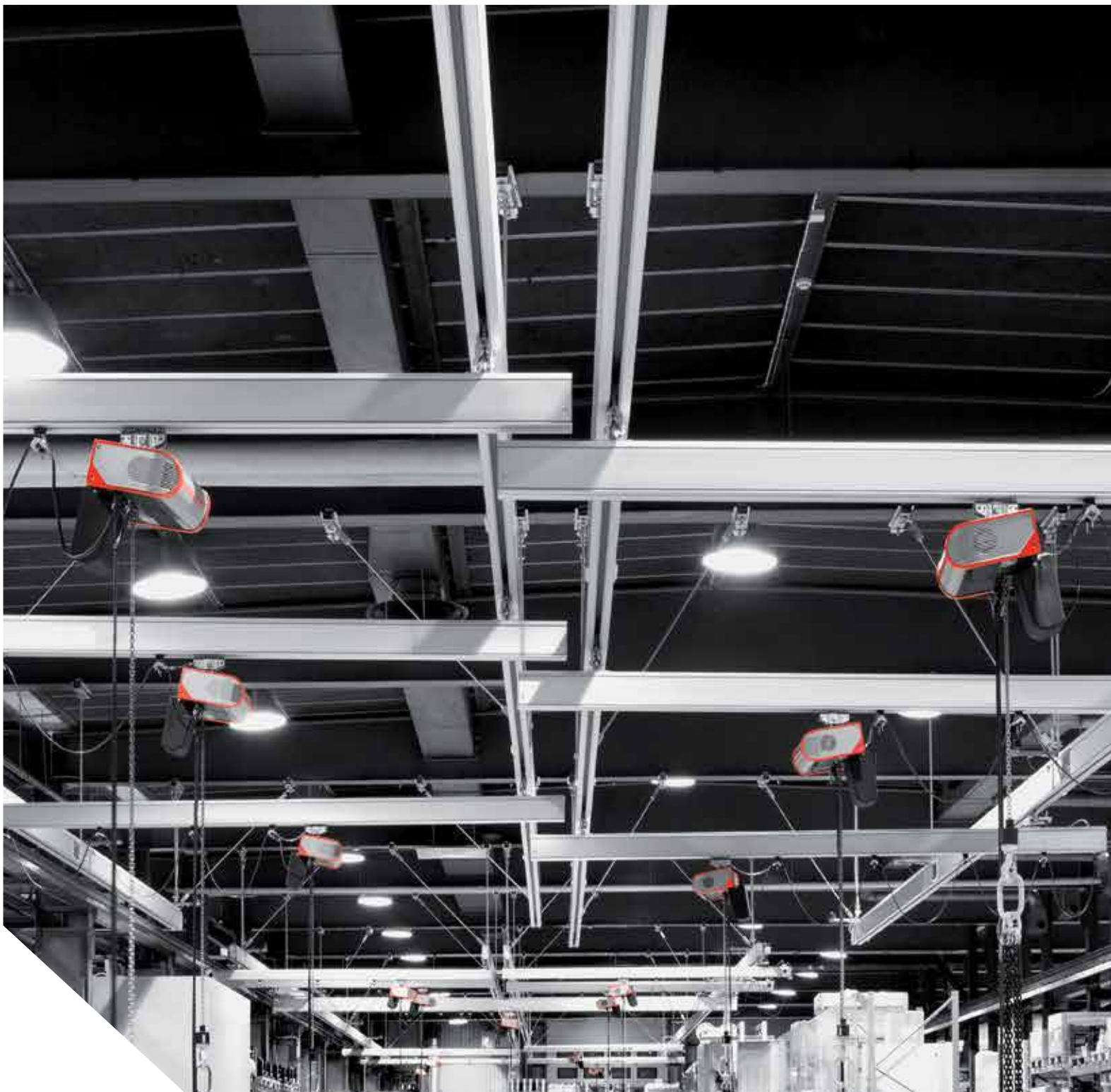
INDUSTRIAL CRANES
NUCLEAR CRANES
PORT CRANES
HEAVY-DUTY LIFT TRUCKS
SERVICE
MACHINE TOOL SERVICE

WORKSTATION LIFTING SYSTEMS

KONECRANES®
Lifting Businesses™

WORKSTATION LIFTING SYSTEMS

THE RIGHT LIFT FOR EVERY STATION





ERGONOMY AND SAFETY THROUGH INNOVATION

Konecranes is known globally for its technologically advanced lifting equipment, supporting a wide variety of industries and environments. Our workstation lifting systems represent the scope of our expertise, from hand-held lifting tools to robust hoists with 20 tons of capacity.

Workstation equipment must often support changing production requirements and operating environments. Konecranes chain hoists and pneumatic lifting devices are adaptable and can meet even the most demanding workstation needs.

Our workstation lifting equipment is designed with safety in mind. The ergonomic features help make the equipment easy to use and support safer lifting. We also manufacture most of our products with suitability for hazardous environments.

The reliability of our lifting equipment is supported by the largest service organization in the industry. We have broad experience in our customers' processes, and we are committed to constantly learning more to help you raise your productivity even higher.



The figures are based on estimates of
The International Labor Organization, 2010.

Workplace accidents are a major financial burden for employers and a serious health risk for employees. We have designed all our lifting equipment with safety and ergonomics foremost in mind to make our contribution to preventing work-related accidents and diseases.

Extremely versatile and durable
CLX and SLX hoists are ideal
for demanding workstation use.
Compact headroom, hook suspension
and various other features provide
necessary flexibility.



CLX Electric Chain Hoist

UP TO 5 TONS OF LASTING LIFTING POWER

- 50% ED rating (up to FEM 3m / ASME H4) with 300 starts per hour
- Temperature monitoring and fan ventilation as standard
- Hoisting ambient temperature between -20 °C and +40 °C (-4 °F and +104 °F) as standard
- Less stress on the chain with new, patented chain drive
- Brake and slipping clutch prevent the load from dropping or micro-slipping
- Robust upper and lower limit switches are integrated into hoist body

EASY SERVICEABILITY AND SIMPLE MAINTENANCE ACCESS MINIMIZES DOWNTIME

- Easy replacement of components with plug-in connections
- Improved safety with hoist limit switch, securing brake, and hook block
- Maintenance-free gearbox
- No special tools required for servicing the hoist
- Self-adjusting magnetic brake designed for the lifetime of the hoist
- IP55 protection against dust and water



reddot design award
product design 2013

The CLX hoist series won the prestigious Red Dot Award for product design in 2013. An international design award created by Design Zentrum Nordrhein-Westfalen in Germany, it is one of the most sought after quality marks for excellent design.



Electric Chain Hoists are available as EX products.



SLX Electric Chain Hoist

A PERFECT CHOICE FOR DEMANDING USE

- All the CLX features and more
- Stepless hoisting speeds with inverter
- Shorter cycles with XSR
- Excellent for precise assembly work and sensitive parts handling

EFFICIENCY AND SAFETY WITH ADVANCED TECHNOLOGY

- Electronic overload device and slack chain control
- Programmable limit switches
- Faster hoisting and lowering of partial loads with XSR
- Shock Load Absorption for reducing the effects of shock loads
- Clutch and brake supervision through pulse sensors for better safety

CLX AND SLX KEY OPTIONS

- Voltages 208 to 575 in 50 and 60 Hz
- Self-locking hook
- Stainless steel hook and hook block
- Manual brake release
- Low headroom trolley
- Swiveling trolley
- Ambient temperature up to +50 °C (122 °F)

CLX AND SLX

	02	05	10	16	25
	CLX	CLX & SLX	CLX & SLX	CLX	CLX
Min. speed ¹ (fpm)	6.5	4.25/1	2.3/0.5	2.3*	2.3*
(m/min)	2	1.3/0.32	0.7/0.16	0.7*	0.7*
Max. speed (fpm)	65	65	65	52*	65*
(m/min)	20	20	20	16*	20*
XSR ² (fpm)	Not available	105*	105*	Available later	Available later
(m/min)		32*	32*		
C-dimension ³ (in.)	14 ^{5/8}	16 ^{1/2}	21 ^{3/8} /25 ^{1/2}	21 ^{3/8} /27 ^{1/4} *	24/29 ^{7/8} *
(mm)	373/-	420/-	544/647	544/693*	610/760*

* Available June 2015



¹ CLX/SLX ² XSR = Extended speed range for SLX ³ 1-fall / 2-fall

A photograph of a Konecranes ATB AirBalancer crane system. The system is mounted on a horizontal metal beam. It features a black rectangular control box, a silver cylindrical air motor, and a blue coiled air line. A black cable is also visible, connected to the system. The background shows a blurred industrial setting with metal structures.

Konecranes ATB AirBalancer utilizes pneumatic power for efficient, silent, and clean lifting operations. It is an environmentally friendly solution to improve workstation efficiency.



ATB AirBalancer is also available as EX products.



ATB AirBalancer

IMPROVED PRODUCTIVITY WITH SHORTER CYCLE TIMES

- Load capacity up to 770 lbs / 350 kg, load weight compensation as standard
- Adjustable speeds up to 60" / 1.5 m per second, shorter cycle times
- Ergonomic 3-dimensional load movement without buttons or handles
- Extremely heavy-duty with 100% duty cycle
- Highly configurable to perfectly match the needed application

YOUR LOADS WILL FEEL ALMOST WEIGHTLESS

- Great tool for assembling, packing, and manoeuvring items by hand
- Increased safety with centrifugal brake and wear-free overload protection
- Clean and quiet working environment due to power source
- Precise handling with a great variety of control systems and optional features

KEY OPTIONS

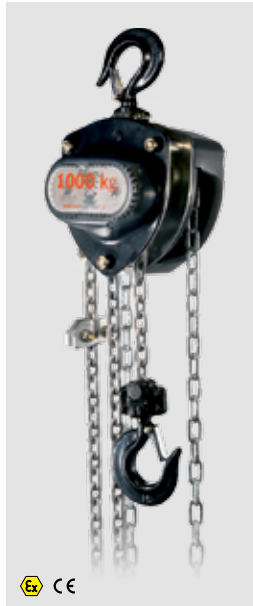
- Vertical drift lock to prevent the load from drifting down
- Baseload function to keep the air pressure at a safe level *
- Load limiter function *
- Proportional push button or inline handle *
- No buttons required with predefined weights *
- Balancing control with automatic load detection *
- Interlock function to prevent the release of the lifted load *

* Also available for ATL



ATB	ATB 70-2000B	ATB 120-2000B	ATB 120-3000B	ATB 160-2000B	ATB 225-1800B	ATB 350-1200B	ATB 350-2000B
Stroke (in./mm)	79" / 2000	79" / 2000	118" / 3000	79" / 2000	71" / 1800	47" / 1200	79" / 2000
Weight (lbs/kg)	60 / 27	77 / 35	88 / 40	88 / 40	92 / 42	88 / 40	99 / 45
SWL (lbs/kg) at 7 bar / 102 psi	155 / 70	265 / 120	265 / 120	350 / 160	495 / 225	770 / 350	770 / 350

When working in an environment where electricity is not available or impractical to use, Konecranes manual products are ready to do the lifting. They are an economical solution with wide load ranges and various features to enhance your work ergonomics.



KM2 Hand Chain Block



KMP Hand Chain Block



Manual products

DURABLE MANUAL HOISTS PACKED WITH FEATURES

- Galvanized grade 80 alloy steel load chain
- Stainless steel chains and hook and chain collector as options
- Rugged construction featuring a steel gear case and hand wheel cover
- Totally enclosed brake provides protection against dirt
- Dual pawl Weston-style brake with two friction discs, 4 braking surfaces

KM2 Hand Chain Block

- Smooth and efficient operations with machined chain sprocket and gears
- Rugged construction featuring a steel gear case and hand wheel cover

KMP Hand Chain Block

- Torque limiter as overload device
- One extra bearing to support the load wheel

KL Lever Puller

- Ideal for e.g. construction, maintenance, and service
- 360° handle rotation and rubber grip
- Lifting mechanism can be released when unloaded

KLP Lever Puller Heavy Duty

- Compact and lightweight design
- 360° handle rotation and 15° handle recovery
- Open chain path for simple inspection and cleaning
- Smooth free-wheel feature for easy chain adjustment
- Machined chain sprocket ensures efficient operation
- High strength, grade 100 alloy steel load chain

VERSATILE MANUAL TROLLEYS FOR DEMANDING USE

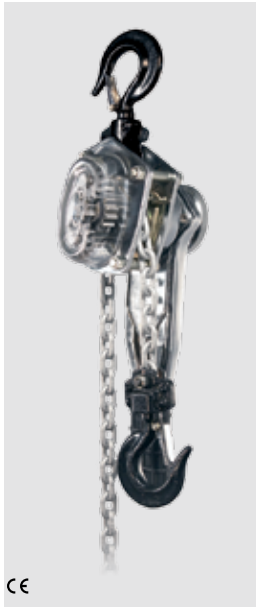
- Trolley plates in high resistance steel
- Designed for both manual and electrical hoists
- Wider flanges available

KPT & KPTC Manual Trolleys

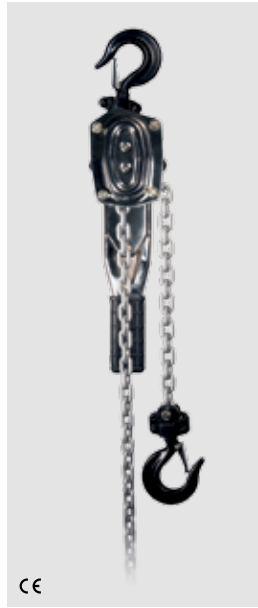
- Easily adjustable for a wide range of flange widths up to 12.2" / 310 mm
- Safety drop lugs and rubber bumpers included
- Wheel ball bearings are sealed and maintenance-free

Low Headroom Trolley

- Galvanized hand chain-driven trolley
- Adjustable according to beam width up to 12" / 305 mm
- Optimized headroom
- Push trolleys available as options



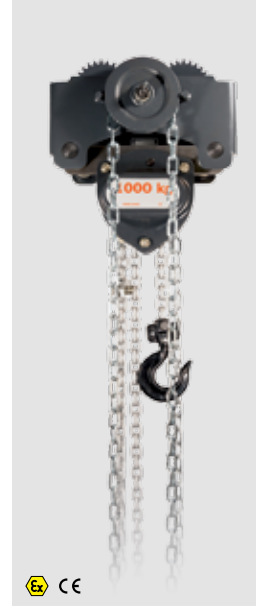
KL Lever Puller



KLP Lever Puller Heavy Duty



KPT & KPTC Manual Trolleys



Low Headroom Trolley



MANUAL CRANES AND ARTICULATED TROLLEYS – RELIABLE LIFTING WITH WIDE SPANS

KCT & KCU Top- and Under-running Manual Cranes

- Span of up to 52 ft / 16 m
- Optimized solution for lifting heavy loads without electricity
- Galvanized hand chain-driven trolley

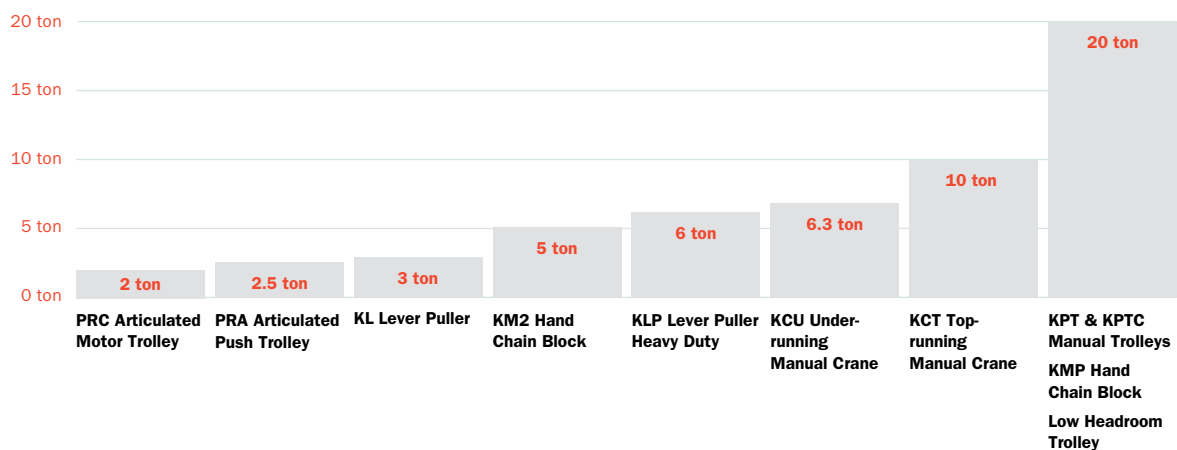
PRA Articulated Push Trolley

- Span of up to 26 ft / 8 m
- Designed for hand-operated articulated sliding girders

PRC Articulated Motor Trolley

- Span of up to 39 ft / 12 m
- Designed for electrically powered articulated sliding girders

LOAD CAPACITIES





A SERVICE-MINDED TEAM

With the largest, most experienced service network in the industry, Konecranes experts are always nearby and ready to help. Our approach to service is simple—help your business achieve maximum lifecycle value for its cranes with minimum total cost of ownership. Through regular preventive maintenance and timely repairs, your cranes will be lifting your business for years to come.

MAINTENANCE

Maintenance done right is not an expense. It is an investment that pays a measurable return. We have more than 430,000 pieces of equipment under maintenance contracts and more than 80 years of experience behind us. If you would like to keep your crane working reliably with regular preventive maintenance, please get in touch.

SPARE PARTS

With a global spare parts network and a parts organization that is the OEM for more than 40 brands of cranes and hoists, we offer quick delivery of spare parts for any crane, anywhere. If we don't have what you need and can't get it through our extensive supplier network, our engineers can quickly design parts to your exact specifications. And when an original equipment manufacturer goes out of business, we can manufacture original spare parts.

TRAINING

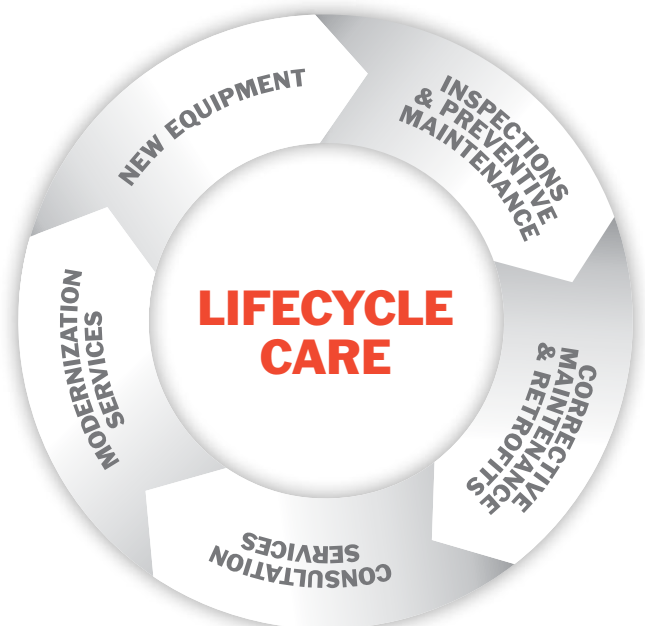
At our respected Training Institute, we train crane operators and technicians from around the world. This training includes crane operator and safety training, emergency procedures, OSHA and ANSI regulations and other relevant information that operators need to promote a safe and productive work environment.



LIFECYCLE CARE - OUR APPROACH TO MAINTENANCE

Lifecycle Care provides the highest lifecycle value for your lifting equipment—maximizing the productivity of uptime and minimizing the cost of downtime. Our crane experts apply a systematic Risk and Recommendation Method and a consultative, planning and review process to drive continuous improvement in safety and productivity.

- **Inspections and Preventive Maintenance** identify certain areas of risk and improvement opportunities and support compliance.
- **Corrective Maintenance and Retrofits** address specific safety and productivity issues and capitalize on improvement opportunities.
- **Consultation Services** guide decision-making, uncover critical issues and maximize your return on investment.
- **Modernizations** economically prolong the service life of your lifting equipment.
- **New Lifting Equipment** for new facilities or to replace old lifting equipment.





INDUSTRIAL
CRANES



NUCLEAR
CRANES



PORT
CRANES



HEAVY-DUTY
LIFT TRUCKS



SERVICE




MACHINE
TOOL
SERVICE



Konecranes is a world-leading group of Lifting Businesses™ offering lifting equipment and services that improve productivity in a wide variety of industries. The company is listed on Nasdaq Helsinki Ltd (symbol: KCR1V). With almost 12,000 employees at 600 locations in nearly 50 countries we have the resources, technology and determination to deliver on the promise of Lifting Businesses™.

© 2016 Konecranes Plc. All rights reserved.

'Konecranes', 'Lifting Businesses' and  are either registered trademarks or trademarks of Konecranes Plc.



USA: konecranesUSA.com
Canada: en.konecranes.ca