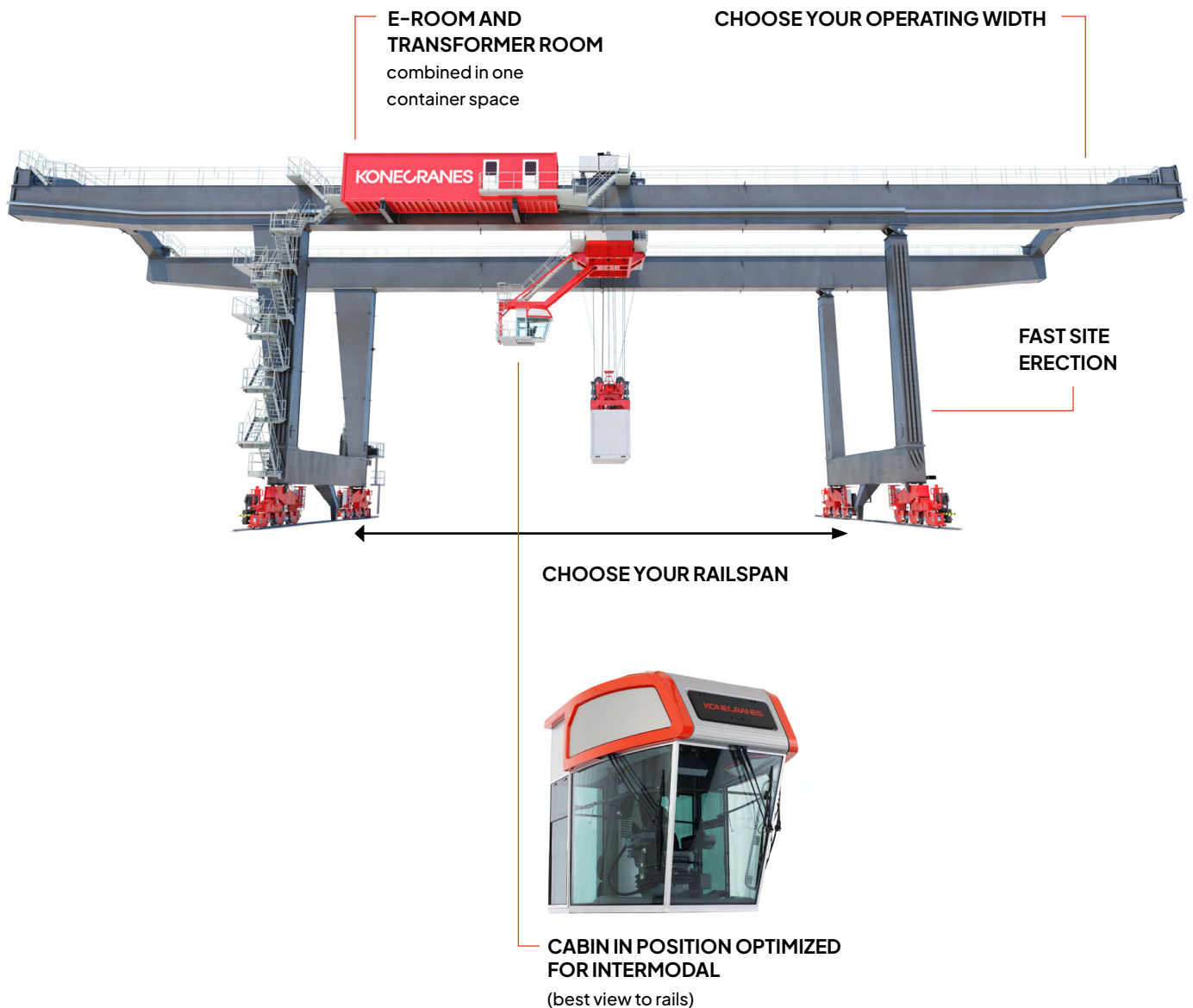


# Konecranes Rail-Mounted Gantry Crane (RMG)

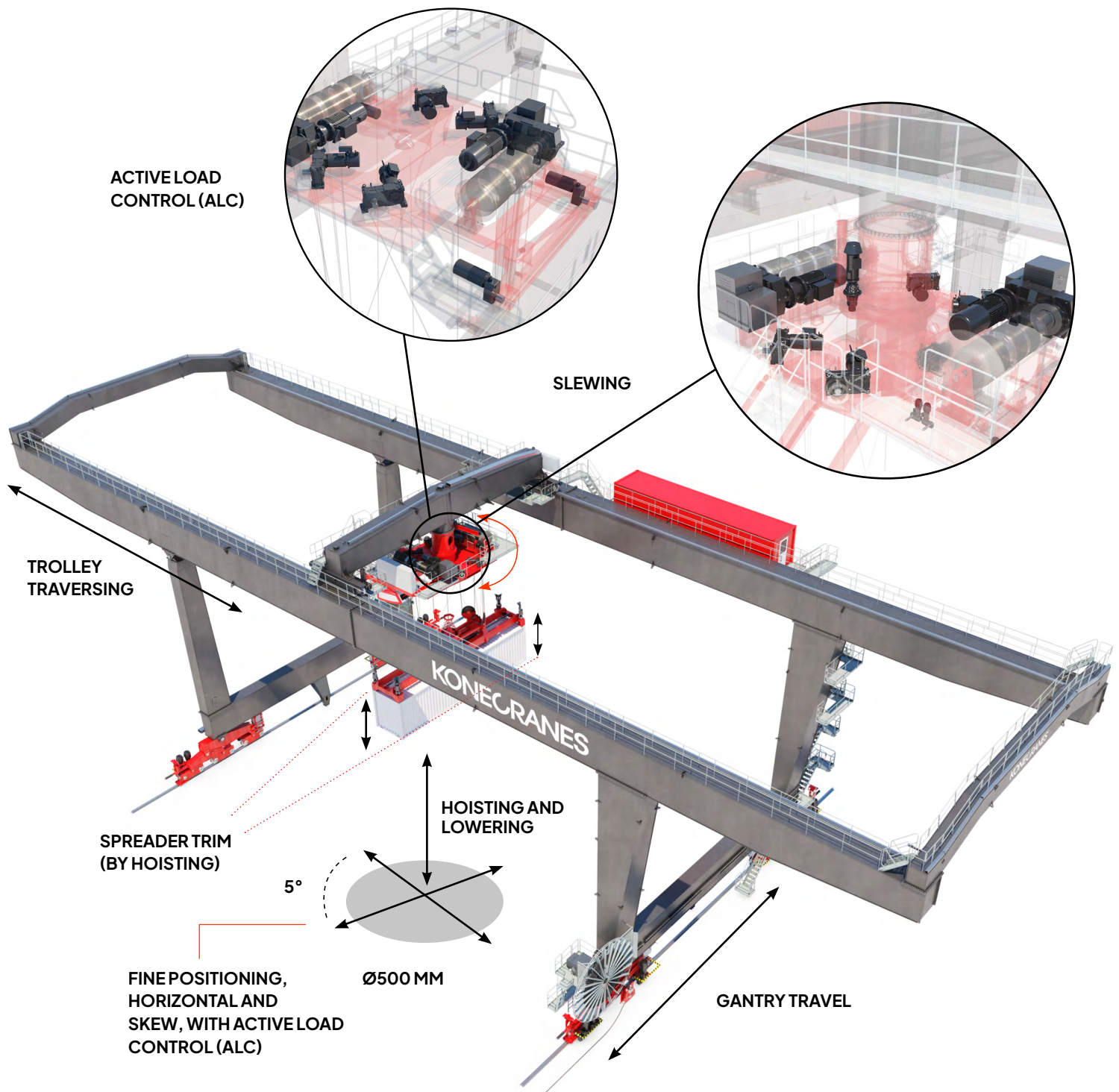


# Modular and customizable to your requirements





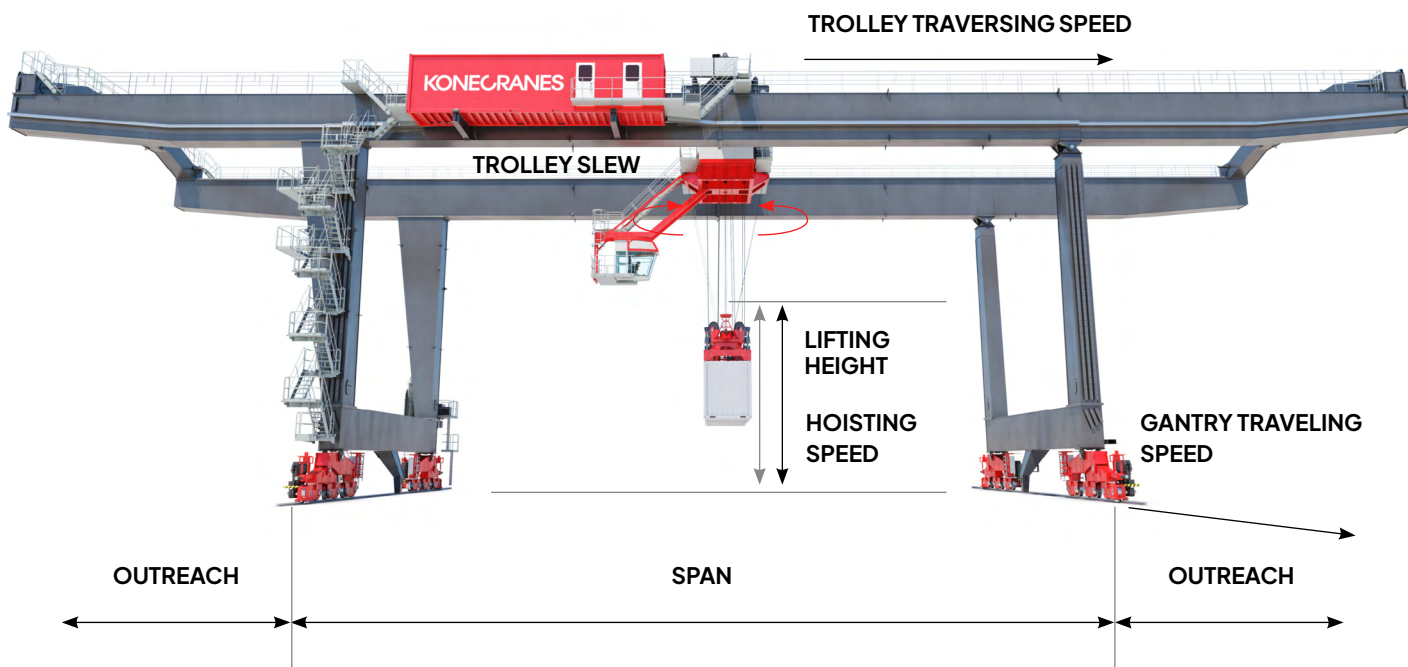
# Main functions



# Konecranes RMG

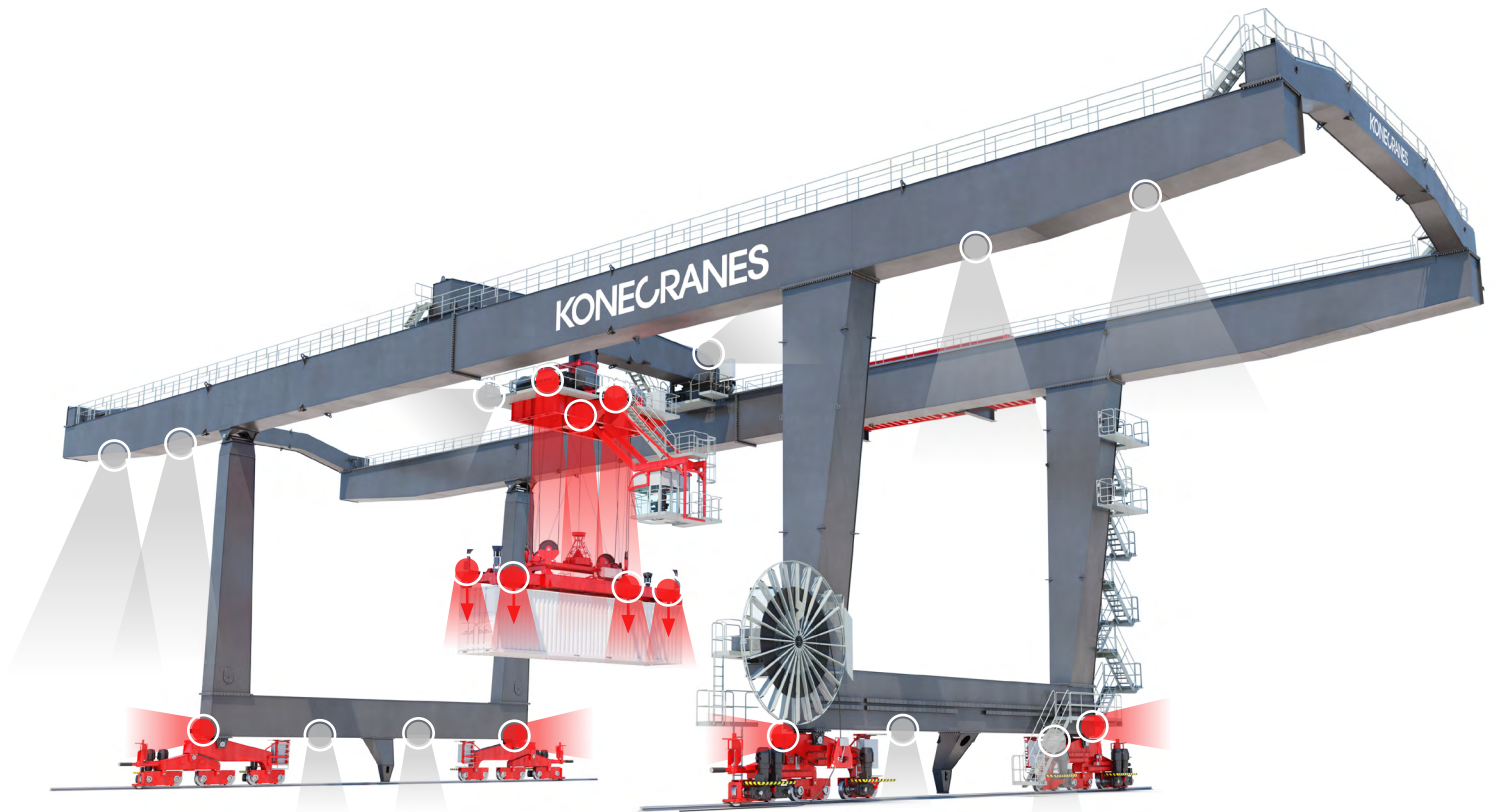


# Dimensions, speeds



SPAN	OUTREACH (CANTILEVERS)	LIFTING HEIGHT	CAPACITY	HOISTING SPEED	TROLLEY SLEWING SPEED /SLEWING ANGLE	TROLLEY TRAVERSING SPEED	GANTRY TRAVELING SPEED
Max. 48 000	Max. 2 x 18 000	Max. 19 000 (1-OVER-5)	40 - 50 t (STD) Max. 45 t (STD), with grapple arms Max. 65 t (HD), twin-lift	30 - 45 m/min (loaded) 60 - 90 m/min (empty)	1.6 - 2 rpm / 310 °	120 - 150 m/ min	120 - 150 m/ min

# Clearest view in all directions



## A/V component locations

- PTZ camera in the trolley
- 4 fixed cameras in the spreader
- 4 fixed cameras on the bogies
- Crane-to-crane anti-collision lasers in bogies
- Microphone in the cabin
- Loudspeaker on the trolley



+



- Multiple optional cameras



# Path to port automation

## 1. Manual operation

Start with your existing manual equipment at the quayside, on the apron or in the container yard. We know you probably have different brands of equipment – we can do retrofits on non-Konecranes equipment too.

## 2. Smart Features

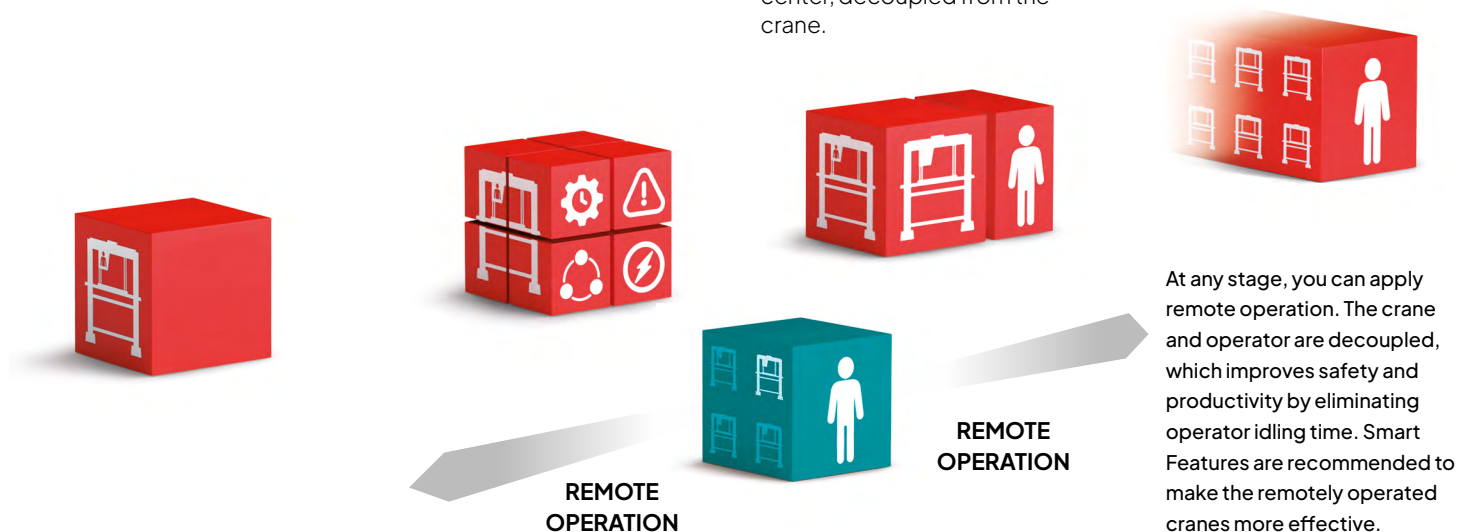
Add Smart Features to improve your performance and safety. For new equipment or as retrofits to existing equipment, ensuring that your operator experience is harmonized.

## 3. Supervised operation

Give your operators the power of automation to assist with repetitive tasks. For example, automated RMG stacking and housekeeping in the yard. The onboard operator stays in control in the cabin, learning how the system works. From there, the transition to automation is easier. The operator can be smoothly relocated to a remote operating center, decoupled from the crane.

## 4. Automated operation

If you move to automated operation, adding automation technology and system elements in the yard, it's a relatively simple transition that can be done in manageable phases, step-by-step at the pace you and your business need.



## Remote Operating Station (ROS)


The Konecranes ROS is the product of detailed ergonomic analysis and feedback from customers.

- 38" wide screen
- 10" touchpanel
- 2 joysticks
- Headset
- Adjustable table and screen height





Konecranes is a world-leading group of Lifting Businesses, serving a broad range of customers, including manufacturing and process industries, shipyards, ports and terminals. Konecranes provides productivity enhancing lifting solutions as well as services for lifting equipment of all makes. In 2022, Group sales totaled EUR 3.4 billion. The Group has approximately 16,500 employees in around 50 countries. Konecranes shares are listed on the Nasdaq Helsinki (symbol: KCR).

© 2024 Konecranes. All rights reserved. 'Konecranes', 'Lifting Businesses' and  are either registered trademarks or trademarks of Konecranes.

This publication is for general informational purposes only. Konecranes reserves the right at any time, without notice, to alter or discontinue the products and/or specifications referenced herein. This publication creates no warranty on the part of Konecranes, express or implied, including but not limited to any implied warranty or merchantability or fitness for a particular purpose.



**KONECRANES** Moves what matters.